



SURFACE VEHICLE RECOMMENDED PRACTICE

J1353™

DEC2023

Issued 1987-04
Revised 2013-10
Reaffirmed 2023-12

Superseding J1353 SEP2018

Nomenclature - Clam Bunk Skidder

RATIONALE

Update references.

SAE J1353 has been reaffirmed to comply with the SAE Five-Year Review policy.

1. SCOPE

This SAE Recommended Practice identifies major components and parts peculiar to clam bunk skidders. Illustrations used here are not intended to include all existing machines or to be exactly descriptive of any particular machine. They have been provided to illustrate the principles to be used in applying this document.

1.1 Purpose

The purpose of this document is to provide standardization of terms for major components of clam bunk skidders.

2. REFERENCES

2.1 Related Publication

The following publications are provided for information purposes only and are not a required part of this SAE Technical Report.

2.1.1 ISO Publication

Available from American National Standards Institute, 25 West 43rd Street, New York, NY 10036-8002, Tel: 212-642-4900, www.ansi.org.

ISO 6814 Machinery for Forestry — Mobile and Self-propelled machinery — Terms, definition and classification

3. DEFINITIONS

3.1 CLAM BUNK SKIDDER (Figures 1 and 2)

A self-propelled machine designed to transport trees or parts of trees by trailing or dragging by using an integrally mounted grapple loader to assemble the load and clam or top-opening jaw to hold the load.

SAE Technical Standards Board Rules provide that: "This report is published by SAE to advance the state of technical and engineering sciences. The use of this report is entirely voluntary, and its applicability and suitability for any particular use, including any patent infringement arising therefrom, is the sole responsibility of the user."

SAE reviews each technical report at least every five years at which time it may be revised, reaffirmed, stabilized, or cancelled. SAE invites your written comments and suggestions.

Copyright © 2023 SAE International

All rights reserved. No part of this publication may be reproduced, stored in a retrieval system or transmitted, in any form or by any means, electronic, mechanical, photocopying, recording, or otherwise, without the prior written permission of SAE.

TO PLACE A DOCUMENT ORDER: Tel: 877-606-7323 (inside USA and Canada)
Tel: +1 724-776-4970 (outside USA)
Fax: 724-776-0790
Email: CustomerService@sae.org
http://www.sae.org

For more information on this standard, visit
https://www.sae.org/standards/content/J1353_202312/

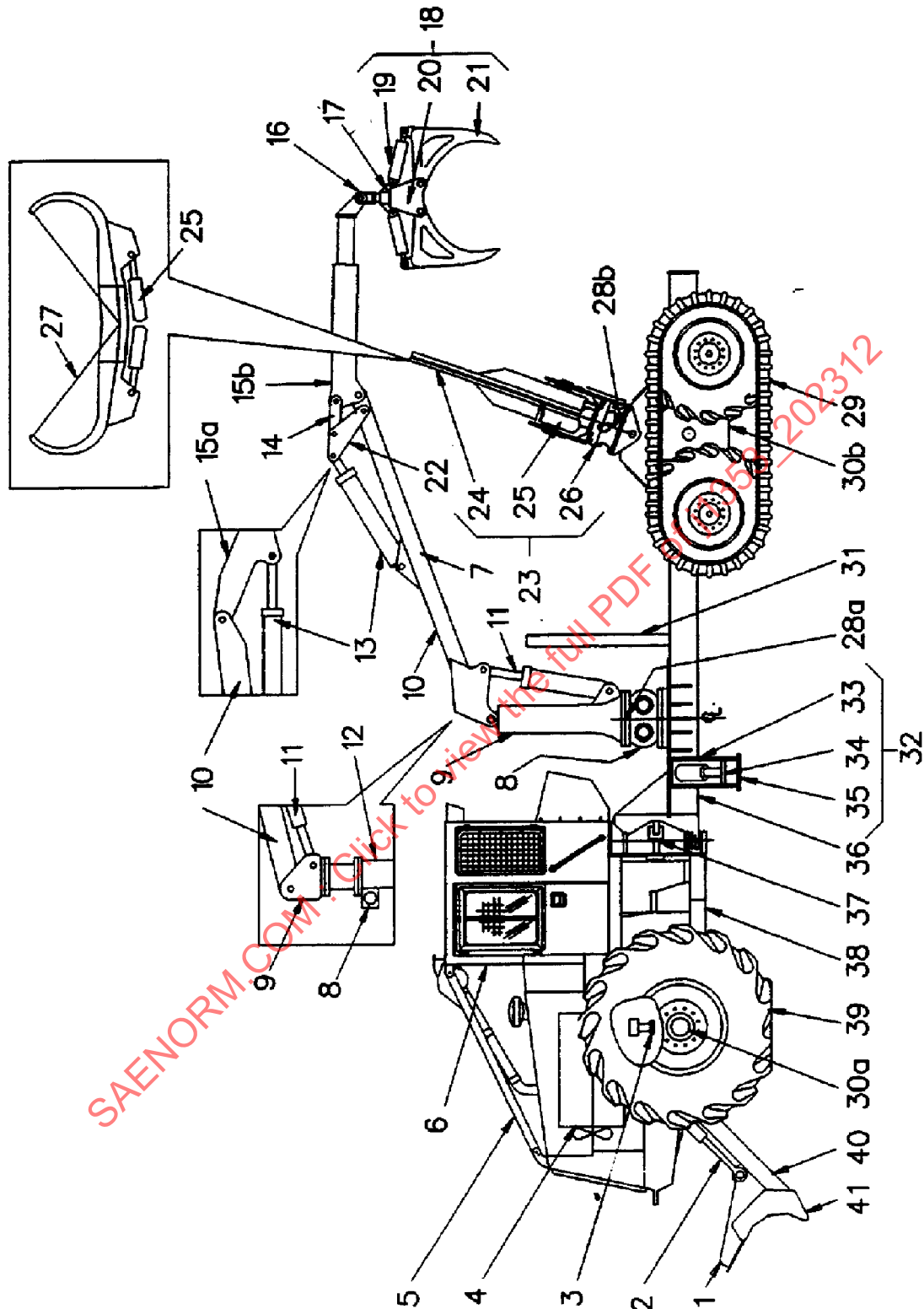


FIGURE 1 - CLAM BUNK SKIDDER

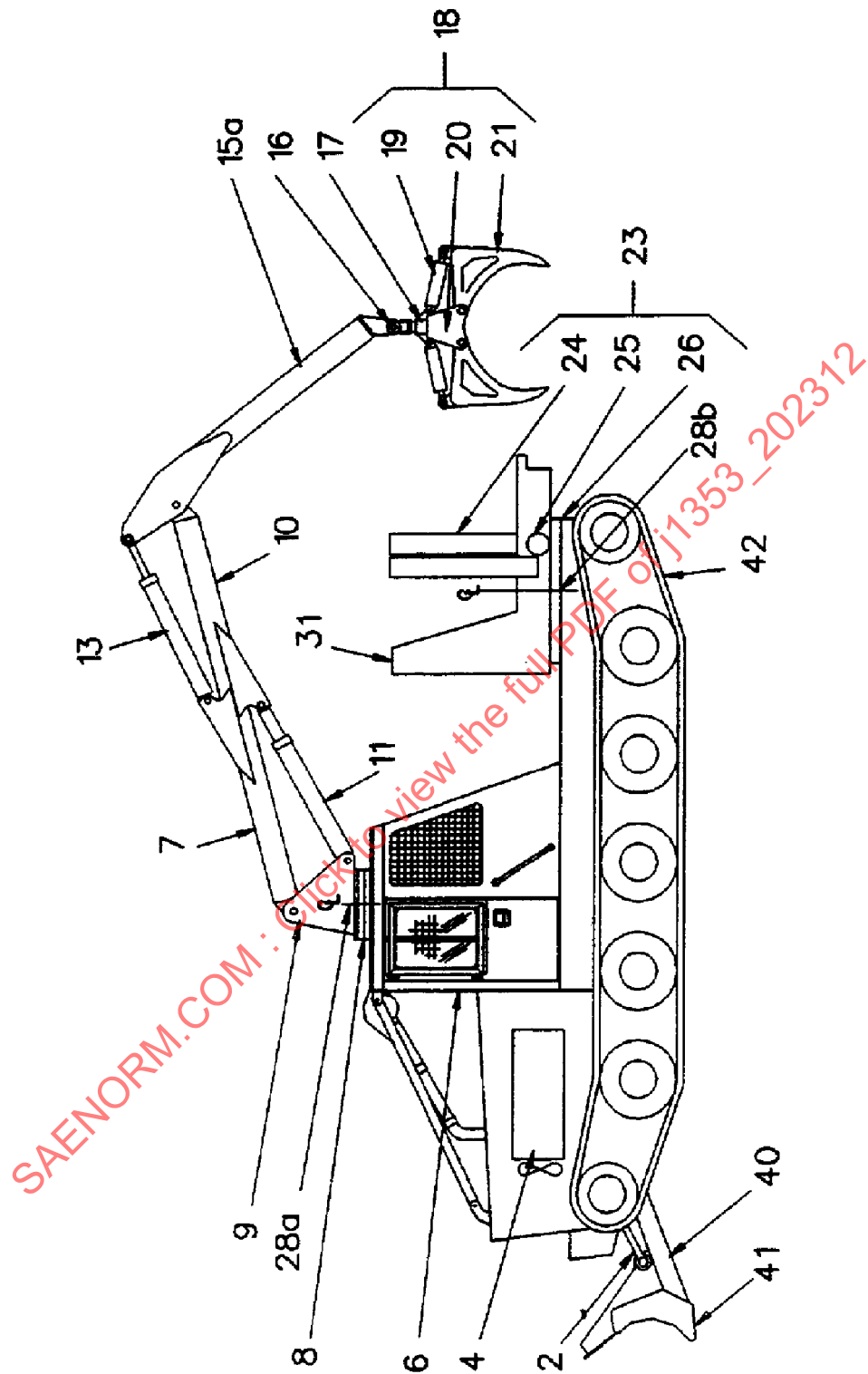


FIGURE 2 - CLAM BUNK SKIDDER (CONTINUED)

4. NOMENCLATURE

1. Decking Lug
2. Blade Cylinder
3. Oscillation Lock (Axle or Frame Oscillation)
4. Power Plant
5. Sweep
6. Operator Station
7. Loader Mechanism composed of items 8 through 22
 8. Swing Assembly
 9. Head
 10. Main Boom
 11. Main Boom Cylinder
 12. Mast
 13. Stick (Secondary) Boom Cylinder
 14. Link
 15. Stick (Secondary) Boom
 - a.Fixed
 - b.Telescopic
 16. Grapple Yoke
 17. Grapple Rotator Assembly
 18. Grapple
 19. Grapple Arm Cylinder
 20. Grapple Head
 21. Grapple Arm
 22. Lever
23. Clam Bunk
 24. Clam Arm
 25. Clam Arm Cylinder
 26. Clam Swivel