

SAE Executive Standards Committee Rules provide that: "This report is published by SAE to advance the state of technical and engineering sciences. The use of this report is entirely voluntary, and its applicability and suitability for any particular use, including any patent infringement arising therefrom, is the sole responsibility of the user."

SAE reviews each technical report at least every five years at which time it may be revised, reaffirmed, stabilized, or cancelled. SAE invites your written comments and suggestions.

REV.  
E

AS9555™

## RATIONALE

UPDATE TO ASME Y14.5-2018. REVISE LEAD CHAMFER TO AS1132. REVISE LIGHTENING HOLE CONFIGURATION TO AS1132). REVISE FILLET RADIUS TO "CR." ADD "COMPOSITION SIMILAR TO" TO NOTE 2.

## NOTICE

THE INITIAL SAE PUBLICATION OF THIS DOCUMENT WAS TAKEN DIRECTLY FROM U.S. MILITARY STANDARD MS9555C. THIS SAE STANDARD MAY RETAIN THE SAME PART NUMBERS ESTABLISHED BY THE ORIGINAL MILITARY DOCUMENT.

ANY REQUIREMENTS ASSOCIATED WITH QUALIFIED PRODUCTS LISTS (QPL'S) MAY CONTINUE TO BE MANDATORY FOR DoD CONTRACTS. REQUIREMENTS RELATING TO QPL'S HAVE NOT BEEN ADOPTED BY THE SAE FOR THIS STANDARD AND ARE NOT PART OF THIS SAE DOCUMENT.

FEDERAL SUPPLY CLASS  
5305

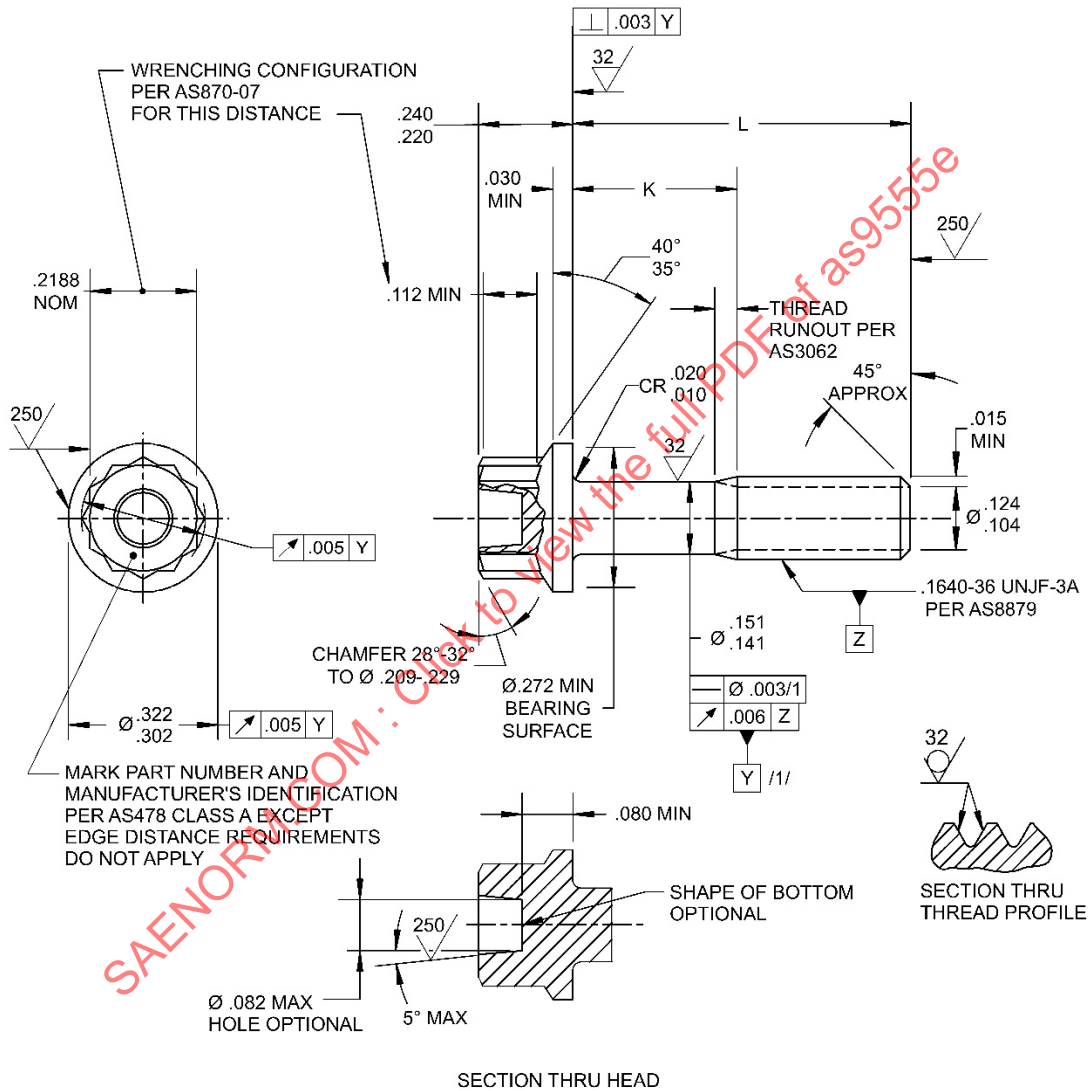


FIGURE 1 - SCREW

For more information on this standard, visit  
<https://www.sae.org/standards/content/AS9555E/>

CUSTODIAN: E-25

PROCUREMENT SPECIFICATION: AS7477 /3/



## AEROSPACE STANDARD

SCREW, MACHINE - DOUBLE HEXAGON EXTENDED WASHER HEAD, CORROSION AND HEAT RESISTANT STEEL, UNS S66286, UTS 130 KSI MIN, .1640-36 UNJF-3A

AS9555™  
SHEET 1 OF 2

REV.  
E