

## RATIONALE

A REVISION IS REQUIRED TO CLARIFY THE DEPTH OF THE FIGURE 1 "G" DIAMETER DIMENSION, UPDATE FORMAT AND MAKE REQUIRED EDITORIAL CHANGES. FIGURE 1 HAS BEEN MODIFIED AND COLUMN H HAS BEEN ADDED TO TABLE 1.

AS85049/124E HAS BEEN REAFFIRMED TO COMPLY WITH THE SAE FIVE-YEAR REVIEW POLICY.

## NOTICE

THE COMPLETE REQUIREMENTS FOR PROCURING THE PRODUCT DESCRIBED HEREIN SHALL CONSIST OF THIS DOCUMENT AND THE LATEST ISSUE OF AS85049.

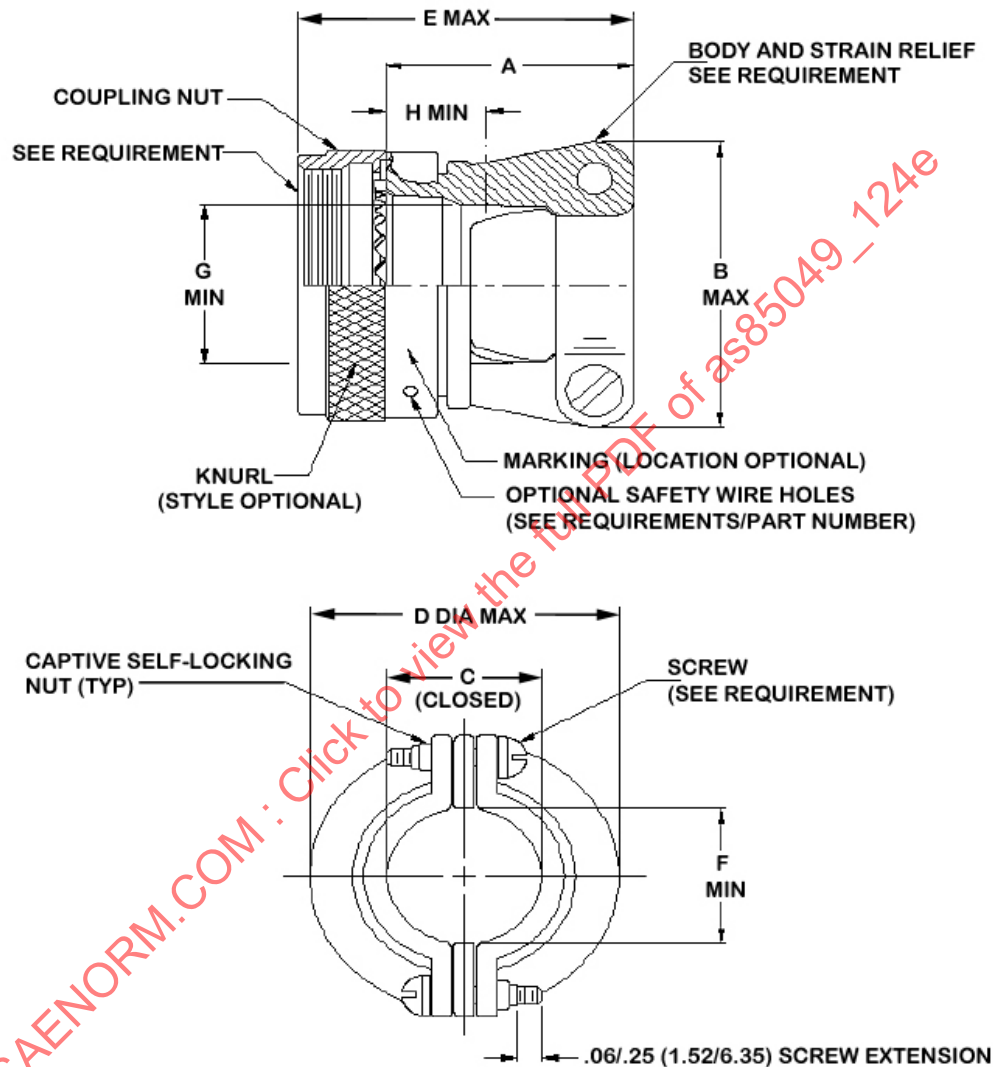
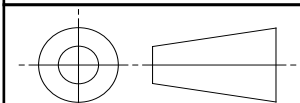


FIGURE 1 - DIMENSIONS AND CONFIGURATION

For more information on this standard, visit

<https://www.sae.org/standards/content/AS85049/124E/>

THIRD ANGLE PROJECTION



CUSTODIAN: AE-8C1

PROCUREMENT SPECIFICATION: AS85049

**AEROSPACE STANDARD**

(R) CONNECTOR ACCESSORIES, ELECTRICAL,  
STRAIN RELIEF, STRAIGHT SELF-LOCKING, AND  
NON-SELF-LOCKING CATEGORY 4C  
(FOR MIL-DTL-3899 SERIES III AND IV CONNECTORS)

**AS85049™/124**  
SHEET 1 OF 3

**REV.  
E**

Copyright © 2025 SAE International

All rights reserved. No part of this publication may be reproduced, stored in a retrieval system, transmitted, in any form or by any means, electronic, mechanical, photocopying, recording, or otherwise, or used for text and data mining, AI training, or similar technologies, without the prior written permission of SAE.

TO PLACE A DOCUMENT ORDER: Tel: 877-606-7323 (inside USA and Canada)

Fax: 724-776-0790

Tel: +1 724-776-4970 (outside USA)

Email: [CustomerService@sae.org](mailto:CustomerService@sae.org)

SAE WEB ADDRESS: <http://www.sae.org>

**TABLE 1 - SHELL SIZES AND DIMENSIONS**

CONNECTOR SHELL SIZE	SHELL SIZE CODE (REF)	A LENGTH 1/ (19.6/12.9)	B MAX (22.4)	C DIM ±.031 (0.79) 2/ (5.56)	D MAX DIA (21.79)	E MAX OVERALL LENGTH (25.5)	F MIN (5.6)	G MIN (6.35)	H MIN 3/ (4.70)	SCREW SIZE (REF)
09	A	.77/.51 (19.6/12.9)	.88 (22.4)	.219 (5.56)	.858 (21.79)	1.01 (25.5)	.22 (5.6)	.250 (6.35)	.185 (4.70)	4-40
11	B	.89/.64 (22.6/16.2)	.94 (23.9)	.264 (6.71)	.984 (24.99)	1.13 (28.6)	.27 (6.9)	.356 (9.04)	.301 (7.65)	4-40
13	C	1.01/.76 (27.5/19.3)	1.12 (28.4)	.344 (8.74)	1.157 (29.39)	1.25 (31.6)	.35 (8.9)	.475 (12.07)	.395 (10.03)	4-40
15	D	1.01/.76 (27.5/19.3)	1.19 (30.2)	.460 (11.68)	1.279 (32.49)	1.25 (31.6)	.47 (11.9)	.565 (14.35)	.361 (9.17)	4-40
17	E	1.13/.88 (28.7/22.4)	1.44 (36.6)	.545 (13.84)	1.406 (35.71)	1.37 (34.7)	.55 (14.0)	.685 (17.40)	.482 (12.24)	4-40
19	F	1.38/1.13 (35.1/28.7)	1.56 (39.6)	.615 (15.62)	1.516 (38.51)	1.62 (41.0)	.62 (15.7)	.755 (19.18)	.642 (16.31)	6-32
21	G	1.51/1.26 (38.4/31.9)	1.69 (42.9)	.698 (17.73)	1.642 (41.70)	1.75 (44.3)	.70 (17.8)	.875 (22.23)	.714 (18.14)	6-32
23	H	1.63/1.38 (41.4/35.1)	1.75 (44.5)	.780 (19.81)	1.768 (44.91)	1.87 (47.4)	.78 (19.8)	1.010 (25.65)	.838 (21.30)	6-32
25	J	1.76/1.51 (44.7/38.4)	1.88 (47.8)	.850 (21.59)	1.869 (47.47)	2.00 (50.8)	.85 (21.6)	1.130 (28.70)	.960 (24.40)	8-32

1/ THE "A" DIMENSION IS MEASURED FROM THE BOTTOM OF THE ACCESSORY TEETH TO THE END OF THE STRAIN RELIEF.

2/ CABLE ENTRY IS MEASURED WITH SADDLE BARS CLOSED AND BOTTOMED ON CLAMP EARS.

3/ H MIN IS THE MINIMUM DEPTH OF G DIAMETER MEASURED FROM THE BOTTOM OF THE ACCESSORY TEETH TOWARDS THE REAR OF THE CLAMP BODY.

**REQUIREMENTS:**

**DESIGN AND CONSTRUCTION:**

1. THE ACCESSORY SHALL BE DESIGNED IN ACCORDANCE WITH FIGURE 1 AND TABLE 1. DIMENSIONS ARE IN INCHES AND APPLY AFTER PLATING. METRIC EQUIVALENTS ARE IN PARENTHESES, ARE GIVEN FOR GENERAL INFORMATION ONLY AND ARE BASED ON 1 INCH = 25.4 MM.
2. INTERFACE DIMENSIONS SHALL CONFORM TO AS85049, FIGURE 3 OR 3A.
3. ACCESSORIES CONSIST OF A COUPLING NUT, BODY AND STRAIN RELIEF. THE COUPLING NUT SHALL BE CAPTIVATED TO, AND ROTATABLE ON THE BODY.
4. DETENTED SELF-LOCKING PROVIDES A POSITIVE AUDIBLE DETENTED COUPLING. OPTION "N" IS A FREE SPINNING SELF-LOCKING COUPLING.
5. CLAMPS SHALL HAVE NO PROTRUSIONS OR SHARP EDGES WHICH MAY PINCH CABLE.
6. MATERIAL AND FINISH: SEE TABLE 2.
7. LOCKNUTS AND SCREWS: 300 SERIES CORROSION-RESISTANT STEEL, PASSIVATE; SILVER OR CHROMATE PLATE OPTIONAL.
8. SELF-LOCKING DEVICE: CORROSION RESISTANT MATERIAL.
9. FOR THE NON-SELF-LOCKING COUPLING NUT CONFIGURATION (DASH "-"), THREE (3) EQUALLY SPACED HOLES SHALL BE PROVIDED WITH OPTION "H" AND SHALL ACCOMMODATE .020 (0.51) MAXIMUM SAFETY WIRE.
10. CLAMP ACCOMMODATES AS85049/127 BUSHING.

	<b>AEROSPACE STANDARD</b>	<b>AS85049™/124</b> SHEET 2 OF 3	<b>REV.</b> <b>E</b>
	(R) CONNECTOR ACCESSORIES, ELECTRICAL, STRAIN RELIEF, STRAIGHT SELF-LOCKING, AND NON-SELF-LOCKING CATEGORY 4C (FOR MIL-DTL-3899 SERIES III AND IV CONNECTORS)		