

AS4734

FEDERAL SUPPLY CLASS  
4730

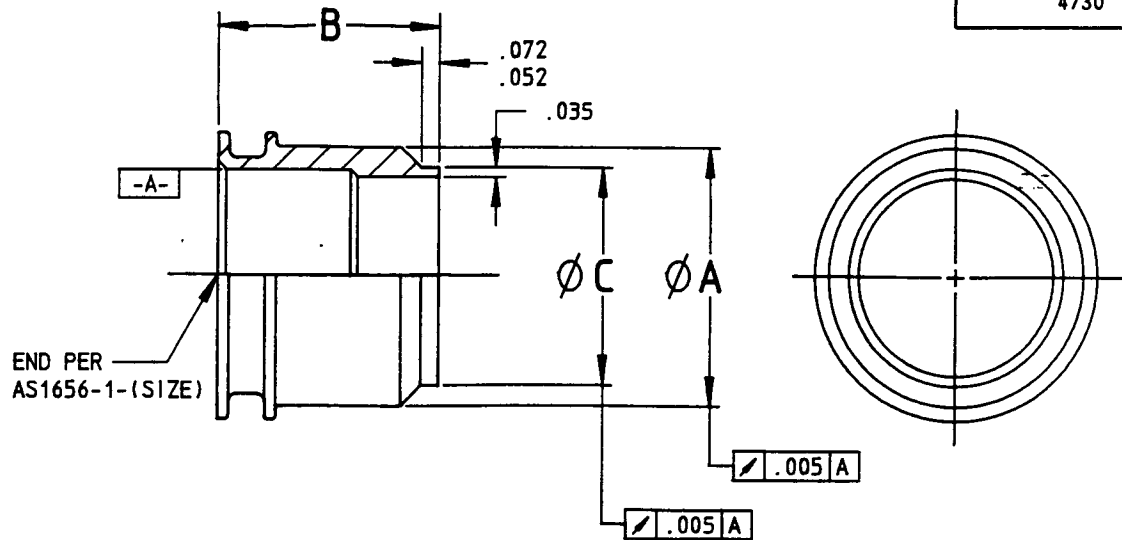
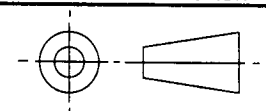


FIGURE 1 - FERRULE

TABLE 1 - FERRULE DIMENSIONS AND WEIGHTS

AS4734 DASH NUMBER	TUBE SIZE (REF)	A MAX /6/	B MAX /6/	C MAX	WEIGHT LB/EA MAX ALUMINUM	WEIGHT LB/EA MAX CRES	WEIGHT LB/EA MAX TITANIUM
08	.500	.625	.749	.505	.010	.029	.018
10	.625	.750	.749	.630	.013	.038	.020
12	.750	.890	.783	.755	.017	.050	.027
16	1.000	1.142	.838	1.005	.023	.068	.038
20	1.250	1.392	.838	1.255	.030	.087	.047
24	1.500	1.642	.838	1.505	.035	.104	.060
28	1.750	1.892	.838	1.755	.042	.122	.072
32	2.000	2.145	.854	2.005	.051	.148	.088
36	2.250	2.395	.854	2.255	.058	.168	.100
40	2.500	2.645	.854	2.505	.069	.195	.115
48	3.000	3.145	.854	3.005	.081	.232	.136
56	3.500	3.645	.854	3.505	.092	.271	.157
64	4.000	4.157	.854	4.005	.111	.322	.192

THIRD ANGLE PROJECTION



CUSTODIAN: SAE G-3/G-3A

PROCUREMENT SPECIFICATION: /3/ AS1650

**SAE** The Engineering Society  
For Advancing Mobility  
Land Sea Air and Space  
**INTERNATIONAL**

400 Commonwealth Drive, Warrendale, PA 15096-0001

**AEROSPACE STANDARD**

FERRULE, THREADLESS  
COUPLING - FIXED CAVITY,  
BUTT WELDED

**AS4734**

SHEET 1 DF 2

SAE Technical Board Rules provide that: "This report is published by SAE to advance the state of technical and engineering sciences. The use of this report is entirely voluntary, and the applicability and suitability for any particular use, including any patent infringement arising therefrom, is the sole responsibility of the user." SAE reviews each technical report at least every five years at which time it may be reaffirmed, revised, or cancelled. SAE invites your written comments and suggestions.