

REV.
B

AS21923

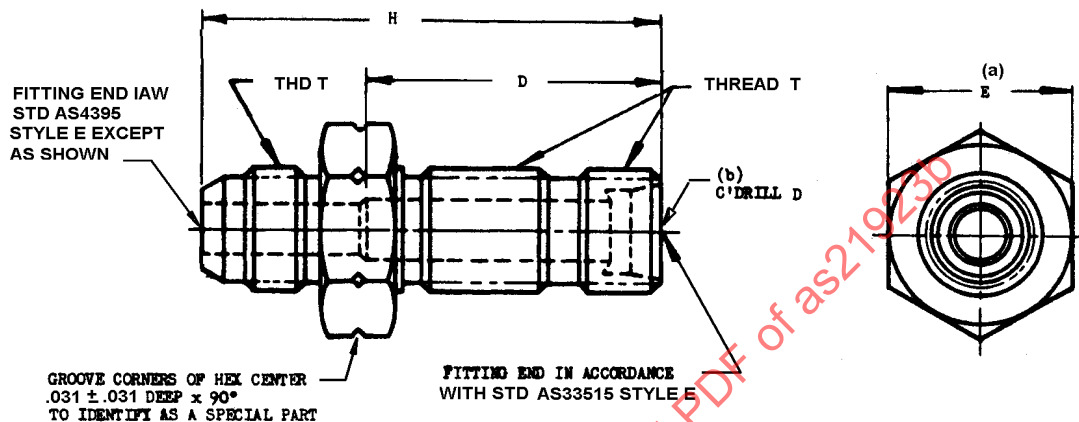
FEDERAL SUPPLY CLASS
4730

RATIONALE

CHANGED THE PROCUREMENT SPECIFICATION FROM MIL-F-18280 TO AS18280, DELETED THE PREAMBLE NOTICE ON FIRST PAGE. ADDED PRI-QPL REQUIREMENT NOTE, ADDED TABLE 2, CADMIUM PLATING NOTICE AND UPDATED FORMAT.

NOTICE

THE INITIAL PUBLICATION OF THIS DOCUMENT WAS TAKEN DIRECTLY FROM U.S. MILITARY STANDARD MS21923. AS5239 IS THE SUGGESTED REPLACEMENT STANDARD. AS5239 ELIMINATES THE POSSIBILITIES OF PART NUMBER DISCREPANCIES ORIGINATING FROM MS21923 PART NUMBERS.



(a) FOR HEX DIMENSIONS AND TOLERANCES, USE AS33515, STYLE E.

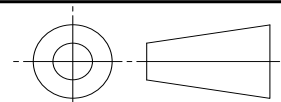
FIGURE 1 - ADAPTER, FLARELESS TUBE, BULKHEAD AND UNIVERSAL TO FLARED TUBE

TABLE 1 - DIMENSIONS

DASH NO. /5/	NOMINAL TUBE SIZE (REF)	T THREAD AS8879	H	E REF (a)	D +.031	WEIGHT, LB/EA, MAX.		
						STEEL	AL ALLOY	TI ALLOY
-2	.125	.3125-24 UNJF-3A	1.531	.563	.938	.032	.012	.018
-3	.188	.3750-24 UNJF-3A	1.625	.625	thru	.047	.017	.027
-4	.250	.4375-20 UNJF-3A	1.750	.688	1.094	.062	.023	.035
-5	.313	.5000-20 UNJF-3A	1.781	.750	thru	.082	.031	.047
-6	.375	.5625-18 UNJF-3A	1.891	.813	thru	.094	.036	.054
-8	.500	.7500-16 UNJF-3A	2.125	1.000	1.344	.172	.063	.099
-10	.625	.8750-14 UNJF-3A	2.375	1.125	1.469	.244	.089	.140
-12	.750	1.0625-12 UNJ-3A	2.656	1.375	thru	.391	.143	.225
-16	1.000	1.3125-12 UNJ-3A	2.688	1.625	1.594	.533	.195	.307
-20	1.250	1.6250-12 UNJ-3A	2.734	1.875	1.594	.784	.288	.452
-24	1.500	1.8750-12 UNJ-3A	2.875	2.125	1.594	.972	.356	.560
-32	2.000	2.5000-12 UNJ-3A	3.563	2.750	2.000			

SAE values your input. To provide feedback on this Technical Report, please visit <http://www.sae.org/technical/standards/AS21923B>

THIRD ANGLE PROJECTION



CUSTODIAN: G-3/G-3B

PROCUREMENT SPECIFICATION: AS18280 /11/



AEROSPACE STANDARD

(R) ADAPTER, FLARELESS TUBE, BULKHEAD AND UNIVERSAL TO FLARED TUBE

AS21923
SHEET 1 OF 3

REV.
B

NOTES:

NOTICE

THIS DOCUMENT REFERENCES A PART WHICH CONTAINS CADMIUM AS PLATING MATERIAL. CONSULT LOCAL OFFICIALS IF YOU HAVE QUESTIONS CONCERNING CADMIUM'S USE.

NOTES:

1. MATERIAL: SEE PROCUREMENT SPECIFICATION.

ALLOY STEEL
ALUMINUM ALLOY
CORROSION RESISTANT STEEL
TITANIUM ALLOY

2. FINISH: SEE PROCUREMENT SPECIFICATION

3. BREAK EDGES .003 TO .015 UNLESS OTHERWISE SPECIFIED.

4. DIMENSIONS ARE IN INCHES. UNLESS OTHERWISE SPECIFIED, TOLERANCES: DECIMALS ± 0.016 , ANGLES $\pm 0^\circ 30'$.

- /5/ PART NUMBERS:

ADD "F" IN PLACE OF "-" FOR 4130 ALLOY STEEL IS REPLACEMENT OF PREVIOUS CODE "-". SEE TABLE 2 /A/
ADD "V(SIZE)P" IN PLACE OF DASH FOR CORROSION RESISTANT STEEL (15-5PH), CADMIUM PLATED
ADD "V" IN PLACE OF DASH FOR CORROSION RESISTANT STEEL (15-5PH), NOT CADMIUM PLATED
ADD "D" IN PLACE OF DASH FOR ALUMINUM ALLOY (2024): SEE TABLE 2 /C/
ADD "W" IN PLACE OF DASH FOR ALUMINUM ALLOY (7075)
ADD "J" IN PLACE OF DASH FOR CORROSION RESISTANT STEEL (TYPE 304)
ADD "K" IN PLACE OF DASH FOR CORROSION RESISTANT STEEL (TYPE 316)
ADD "R" AFTER DASH NUMBER FOR CORROSION RESISTANT STEEL (TYPE 321)
ADD "S" AFTER DASH NUMBER FOR CORROSION RESISTANT STEEL (TYPE 347) IS REPLACED, SEE TABLE 2 /D/
ADD "T" AFTER DASH NUMBER FOR TITANIUM ALLOY (6AL-4V)

EXAMPLES OF PART NUMBERS:

MS21923-4	ADAPTER, .250 TUBING, "-" CODE FOR 4130 ALLOY STEEL IS REPLACED, SEE TABLE 2 /A/
MS21923F4	ADAPTER, .250 TUBING, 4130 ALLOY STEEL
MS21923V4P	ADAPTER, .250 TUBING, CORROSION RESISTANT STEEL (15-5PH), CADMIUM PLATED
MS21923V4	ADAPTER, .250 TUBING, CORROSION RESISTANT STEEL (15-5PH), NOT CADMIUM PLATED
MS21923C4	ADAPTER, .250 TUBING, CORROSION RESISTANT STEEL TYPE 303 IS REPLACED
MS21923D4	ADAPTER, .250 TUBING, ALUMINUM ALLOY (2024) IS CANCELLED AND REPLACED, SEE TABLE 2 /C/
MS21923W4	ADAPTER, .250 TUBING, ALUMINUM ALLOY (7075)
MS21923J4	ADAPTER, .250 TUBING, CORROSION RESISTANT STEEL (TYPE 304)
MS21923K4	ADAPTER, .250 TUBING, CORROSION RESISTANT STEEL (TYPE 316)
MS21923-4R	ADAPTER, .250 TUBING, CORROSION RESISTANT STEEL (TYPE 321)
MS21923-4S	ADAPTER, .250 TUBING, CORROSION RESISTANT STEEL (TYPE 347) CANCELLED, SEE TABLE 2 /D/
MS21923-4T	ADAPTER, .250 TUBING, TITANIUM ALLOY (6AL-4V)

6. DIMENSIONING AND TOLERANCING PER ASME Y14.5M 1982.

- /7/ FOR FITTING END DIMENSIONS AND TOLERANCES USE AS4395, STYLE E FOR FLARED AND AS33514, STYLE E FOR FLARELESS. FOR HEX TOLERANCES USE ARP1201

8. SEE TABLE 2 FOR CANCELLED AND SUPERSEDED DOCUMENT AND PART NUMBERS.

9. REFERENCED DOCUMENTS SHALL BE OF THE ISSUE IN EFFECT ON DATE OF INVITATIONS FOR BID.

10. IN THE EVENT OF A CONFLICT BETWEEN THE TEXT OF THIS STANDARD AND THE REFERENCES CITED HEREIN, THE TEXT OF THIS STANDARD SHALL TAKE PRECEDENCE.

	AEROSPACE STANDARD	AS21923 SHEET 2 OF 3	REV. B
	(R) ADAPTER, FLARELESS TUBE, BULKHEAD AND UNIVERSAL TO FLARED TUBE		