

NFPA®

287

Standard Test Methods for
Measurement of Flammability of
Materials in Cleanrooms Using
a Fire Propagation Apparatus (FPA)

2022



NFPA[®] 287

Standard Test Methods for Measurement of Flammability of Materials in Cleanrooms Using a Fire Propagation Apparatus (FPA)

2022 Edition



NFPA, 1 Batterymarch Park, Quincy, MA 02169-7471
An International Codes and Standards Organization

IMPORTANT NOTICES AND DISCLAIMERS CONCERNING NFPA® STANDARDS




NFPA® codes, standards, recommended practices, and guides (“NFPA Standards”), of which the document contained herein is one, are developed through a consensus standards development process approved by the American National Standards Institute. This process brings together volunteers representing varied viewpoints and interests to achieve consensus on fire and other safety issues. While the NFPA administers the process and establishes rules to promote fairness in the development of consensus, it does not independently test, evaluate, or verify the accuracy of any information or the soundness of any judgments contained in NFPA Standards.

The NFPA disclaims liability for any personal injury, property, or other damages of any nature whatsoever, whether special, indirect, consequential or compensatory, directly or indirectly resulting from the publication, use of, or reliance on NFPA Standards. The NFPA also makes no guaranty or warranty as to the accuracy or completeness of any information published herein.

In issuing and making NFPA Standards available, the NFPA is not undertaking to render professional or other services for or on behalf of any person or entity. Nor is the NFPA undertaking to perform any duty owed by any person or entity to someone else. Anyone using this document should rely on his or her own independent judgment or, as appropriate, seek the advice of a competent professional in determining the exercise of reasonable care in any given circumstances.

The NFPA has no power, nor does it undertake, to police or enforce compliance with the contents of NFPA Standards. Nor does the NFPA list, certify, test, or inspect products, designs, or installations for compliance with this document. Any certification or other statement of compliance with the requirements of this document shall not be attributable to the NFPA and is solely the responsibility of the certifier or maker of the statement.

REVISION SYMBOLS IDENTIFYING CHANGES FROM THE PREVIOUS EDITION

Text revisions are shaded. A  before a section number indicates that words within that section were deleted and a  to the left of a table or figure number indicates a revision to an existing table or figure. When a chapter was heavily revised, the entire chapter is marked throughout with the  symbol. Where one or more sections were deleted, a • is placed between the remaining sections. Chapters, annexes, sections, figures, and tables that are new are indicated with an **N**.

Note that these indicators are a guide. Rearrangement of sections may not be captured in the markup, but users can view complete revision details in the First and Second Draft Reports located in the archived revision information section of each code at www.nfpa.org/docinfo. Any subsequent changes from the NFPA Technical Meeting, Tentative Interim Amendments, and Errata are also located there.

REMINDER: UPDATING OF NFPA STANDARDS

Users of NFPA codes, standards, recommended practices, and guides (“NFPA Standards”) should be aware that these documents may be superseded at any time by the issuance of a new edition, may be amended with the issuance of Tentative Interim Amendments (TIAs), or be corrected by Errata. It is intended that through regular revisions and amendments, participants in the NFPA standards development process consider the then-current and available information on incidents, materials, technologies, innovations, and methods as these develop over time and that NFPA Standards reflect this consideration. Therefore, any previous edition of this document no longer represents the current NFPA Standard on the subject matter addressed. NFPA encourages the use of the most current edition of any NFPA Standard [as it may be amended by TIA(s) or Errata] to take advantage of current experience and understanding. An official NFPA Standard at any point in time consists of the current edition of the document, including any issued TIAs and Errata then in effect.

To determine whether an NFPA Standard has been amended through the issuance of TIAs or corrected by Errata, visit the “Codes & Standards” section at www.nfpa.org.

ADDITIONAL IMPORTANT NOTICES AND DISCLAIMERS CONCERNING NFPA® STANDARDS

Updating of NFPA Standards

Users of NFPA codes, standards, recommended practices, and guides (“NFPA Standards”) should be aware that these documents may be superseded at any time by the issuance of a new edition, may be amended with the issuance of Tentative Interim Amendments (TIAs), or be corrected by Errata. It is intended that through regular revisions and amendments, participants in the NFPA standards development process consider the then-current and available information on incidents, materials, technologies, innovations, and methods as these develop over time and that NFPA Standards reflect this consideration. Therefore, any previous edition of this document no longer represents the current NFPA Standard on the subject matter addressed. NFPA encourages the use of the most current edition of any NFPA Standard [as it may be amended by TIA(s) or Errata] to take advantage of current experience and understanding. An official NFPA Standard at any point in time consists of the current edition of the document, including any issued TIAs and Errata then in effect.

To determine whether an NFPA Standard has been amended through the issuance of TIAs or corrected by Errata, visit the “Codes & Standards” section at www.nfpa.org.

Interpretations of NFPA Standards

A statement, written or oral, that is not processed in accordance with Section 6 of the Regulations Governing the Development of NFPA Standards shall not be considered the official position of NFPA or any of its Committees and shall not be considered to be, nor be relied upon as, a Formal Interpretation.

Patents

The NFPA does not take any position with respect to the validity of any patent rights referenced in, related to, or asserted in connection with an NFPA Standard. The users of NFPA Standards bear the sole responsibility for determining the validity of any such patent rights, as well as the risk of infringement of such rights, and the NFPA disclaims liability for the infringement of any patent resulting from the use of or reliance on NFPA Standards.

NFPA adheres to the policy of the American National Standards Institute (ANSI) regarding the inclusion of patents in American National Standards (“the ANSI Patent Policy”), and hereby gives the following notice pursuant to that policy:

NOTICE: The user’s attention is called to the possibility that compliance with an NFPA Standard may require use of an invention covered by patent rights. NFPA takes no position as to the validity of any such patent rights or as to whether such patent rights constitute or include essential patent claims under the ANSI Patent Policy. If, in connection with the ANSI Patent Policy, a patent holder has filed a statement of willingness to grant licenses under these rights on reasonable and nondiscriminatory terms and conditions to applicants desiring to obtain such a license, copies of such filed statements can be obtained, on request, from NFPA. For further information, contact the NFPA at the address listed below.

Law and Regulations

Users of NFPA Standards should consult applicable federal, state, and local laws and regulations. NFPA does not, by the publication of its codes, standards, recommended practices, and guides, intend to urge action that is not in compliance with applicable laws, and these documents may not be construed as doing so.

Copyrights

NFPA Standards are copyrighted. They are made available for a wide variety of both public and private uses. These include both use, by reference, in laws and regulations, and use in private self-regulation, standardization, and the promotion of safe practices and methods. By making these documents available for use and adoption by public authorities and private users, the NFPA does not waive any rights in copyright to these documents.

Use of NFPA Standards for regulatory purposes should be accomplished through adoption by reference. The term “adoption by reference” means the citing of title, edition, and publishing information only. Any deletions, additions, and changes desired by the adopting authority should be noted separately in the adopting instrument. In order to assist NFPA in following the uses made of its documents, adopting authorities are requested to notify the NFPA (Attention: Secretary, Standards Council) in writing of such use. For technical assistance and questions concerning adoption of NFPA Standards, contact NFPA at the address below.

For Further Information

All questions or other communications relating to NFPA Standards and all requests for information on NFPA procedures governing its codes and standards development process, including information on the procedures for requesting Formal Interpretations, for proposing Tentative Interim Amendments, and for proposing revisions to NFPA standards during regular revision cycles, should be sent to NFPA headquarters, addressed to the attention of the Secretary, Standards Council, NFPA, 1 Batterymarch Park, P.O. Box 9101, Quincy, MA 02269-9101; email: stds_admin@nfpa.org.

For more information about NFPA, visit the NFPA website at www.nfpa.org. All NFPA codes and standards can be viewed at no cost at www.nfpa.org/docinfo.

Copyright © 2021 National Fire Protection Association®. All Rights Reserved.

NFPA® 287

Standard Test Methods for

**Measurement of Flammability of Materials in Cleanrooms Using a Fire
Propagation Apparatus (FPA)**

2022 Edition

This edition of NFPA 287, *Standard Test Methods for Measurement of Flammability of Materials in Cleanrooms Using a Fire Propagation Apparatus (FPA)*, was prepared by the Technical Committee on Fire Tests. It was issued by the Standards Council on October 2, 2021, with an effective date of October 22, 2021, and supersedes all previous editions.

This edition of NFPA 287 was approved as an American National Standard on October 22, 2021.

Origin and Development of NFPA 287

This standard is based on an apparatus developed by Factory Mutual Research Corporation (now FM Global Research) in the mid-1970s. Since then, several organizations have constructed the apparatus from the original FM Global design. It is currently in active use at Underwriters Laboratories in the United States; Gilbert International Ltd, Manchester, UK; INERIS, Verneuil en Halatte, France; and Rhone-Poulenc Research Center, Decines, France. The apparatus-associated test methods are distinct from other fire standards because of the focus on characterizing hazards associated with large-scale, self-sustained, upward, or flow-aided fire propagation on materials and products, not just the response of materials to an imposed, external heat flux.

NFPA 287 was developed to address concerns of the Technical Committee for Cleanrooms.

The 2007 edition was a complete revision for compliance with the *Manual of Style for NFPA Technical Committee Documents*. It also contained a new option for an alternative exhaust system (4.9.2 and Annex C) based on testing conducted by FM Global Research.

The 2012 edition was a reconfirmation of the earlier edition with minor editorial changes.

The 2017 edition included new provisions for smoke damage index, including a new definition and a new equation.

The 2022 edition is a reconfirmation of the earlier edition with minor editorial changes.

Technical Committee on Fire Tests

Barry L. Badders, Jr., Chair
Intertek Testing Services, TX [RT]

Benjamin H. Caldwell, Bjarke Ingels Group (BIG), NY [SE]
Karen C. Carpenter, Southwest Research Institute, TX [RT]
Soph R. Davenberry, National Energy Management Institute Committee (NEMIC), VA [L]
Rick D. Davis, National Institute of Standards & Technology (NIST), MD [RT]
Scott E. Dillon, Crane Engineering, MN [SE]
William E. Fitch, Phyrefish.com, FL [SE]
Richard G. Gann, Gaithersburg, MD [SE]
Marcelo M. Hirschler, GBH International, CA [SE]
Paul A. Hough, Armstrong World Industries, Inc., PA [M]
William E. Koffel, Koffel Associates, Inc., MD [SE]
Sergei V. Levchik, Israel Chemicals Ltd. (ICL-IP), NY [M]
 Rep. ACC-North American Flame Retardant Alliance
Michael E. Luna, ICC NTA, LLC., TX [RT]
James Andrew Lynch, The Fire Solutions Group, PA [SE]
John Martell, Professional Fire Fighters of Maine/IAFF, ME [L]
 Rep. International Association of Fire Fighters

Rodney A. McPhee, Canadian Wood Council, Canada [M]
Kathleen A. Newman, Firetect, CA [M]
Nicholas Ozog, Wiss, Janney, Elstner Associates, Inc., IL [SE]
Arthur J. Parker, JENSEN HUGHES, MD [SE]
Bill Perdue, American Home Furnishings Alliance -AHFA, NC [U]
Shamim Rashid-Sumar, National Ready Mixed Concrete Assn., NY [M]
Michael L. Savage, Sr., Marion County Building Safety, FL [E]
Michael Schmeida, Gypsum Association, OH [M]
David T. Sheppard, US Bureau of Alcohol, Tobacco, Firearms & Explosives, MD [RT]
Dwayne Sloan, UL LLC, NC [RT]
Kuma Sumathipala, American Wood Council, VA [M]
Robert J. Wills, American Iron and Steel Institute, AL [M]
Peter J. Willse, AXA XL/Global Asset Protection Services, LLC, CT [I]
Dong Zeng, FM Global, MA [I]
 Rep. FM Global

Alternates

Marc Alam, Canadian Wood Council, Canada [M]
 (Alt. to Rodney A. McPhee)
Richard J. Davis, FM Global, MA [I]
 (Alt. to Dong Zeng)
Timothy Earl, GBH International, MI [SE]
 (Alt. to Marcelo M. Hirschler)
Stephen Paul Fuss, US Bureau of Alcohol, Tobacco, Firearms & Explosives, MD [RT]
 (Alt. to David T. Sheppard)
Justin A. Geiman, Fire and Risk Alliance LLC, MD [SE]
 (Alt. to James Andrew Lynch)
Karl Dana Houser, Intertek, PA [RT]
 (Alt. to Barry L. Badders, Jr.)
Jonathan Humble, American Iron and Steel Institute, CT [M]
 (Alt. to Robert J. Wills)

Marc L. Janssens, Southwest Research Institute, TX [RT]
 (Alt. to Karen C. Carpenter)
Elizabeth C. Keller, Engineering Systems, Inc., NC [SE]
 (Alt. to Scott E. Dillon)
Cori Leffler, Firetect, CA [M]
 (Alt. to Kathleen A. Newman)
Daniel A. Martin, JENSEN HUGHES, MD [SE]
 (Alt. to Arthur J. Parker)
Jason V. Smart, American Wood Council (AWC), VA [M]
 (Alt. to Kuma Sumathipala)
Matthew T. Vinci, International Association of Fire Fighters, DC [L]
 (Alt. to John Martell)
Luke C. Woods, UL LLC, MA [RT]
 (Alt. to Dwayne Sloan)

Nonvoting

Robert H. Barker, American Fiber Manufacturers Association, VA [M]
Rohit “Rik” Khanna, US Consumer Product Safety Commission (CPSC), MD [C]
 Rep. US Consumer Product Safety Commission
Tracy L. Vecchiarelli, NFPA Staff Liaison

Andrew Lock, US Consumer Product Safety Commission, MD [C]
 Rep. US Consumer Product Safety Commission

This list represents the membership at the time the Committee was balloted on the final text of this edition. Since that time, changes in the membership may have occurred. A key to classifications is found at the back of the document.

NOTE: Membership on a committee shall not in and of itself constitute an endorsement of the Association or any document developed by the committee on which the member serves.

Committee Scope: This Committee shall have primary responsibility for documents on fire testing procedures, for reviewing existing fire test standards and recommending appropriate action to NFPA, for recommending the application of and advising on the interpretation of acceptable test standards for fire problems of concern to NFPA technical committees and members, and for acting in a liaison capacity between NFPA and the committees of other organizations writing fire test standards. This Committee does not cover fire tests that are used to evaluate extinguishing agents, devices, or systems.

Contents

Chapter 1 Administration	287– 4	Chapter 6 Test Specimens	287– 19
1.1 Scope.	287– 4	6.1 Specimen Holders.	287– 19
1.2 Purpose.	287– 4	6.2 Conditioning.	287– 19
1.3 Symbols.	287– 5	6.3 Specimen Size and Preparation.	287– 19
1.4 Units.	287– 5	6.4 Mounting Methods.	287– 20
Chapter 2 Referenced Publications	287– 6	Chapter 7 Test Procedure	287– 22
2.1 General.	287– 6	7.1 Procedure 1: Ignition Test.	287– 22
2.2 NFPA Publications. (Reserved)	287– 6	7.2 Procedure 2: Combustion Test.	287– 22
2.3 Other Publications.	287– 6	7.3 Procedure 3: Fire Propagation Test.	287– 23
2.4 References for Extracts in Mandatory Sections.	287– 6	7.4 Safety Precautions.	287– 23
Chapter 3 Definitions	287– 6	Chapter 8 Calculations	287– 23
3.1 General.	287– 6	8.1 Critical Heat Flux (CHF).	287– 23
3.2 NFPA Official Definitions.	287– 6	8.2 Thermal Response Parameter (TRP).	287– 23
3.3 General Definitions.	287– 6	8.3 Fire Propagation Index (FPI).	287– 24
Chapter 4 Test Apparatus	287– 6	8.4 Effective Heat of Combustion (EHC).	287– 24
4.1 General.	287– 6	8.5 Smoke Calculations.	287– 24
4.2 Infrared Heating System.	287– 6	8.6 Convective Heat Release Rate.	287– 25
4.3 Load Cell System.	287– 8	Chapter 9 Report	287– 25
4.4 Ignition Pilot Flame.	287– 8	9.1 General Test Description and Ignition Test.	287– 25
4.5 Ignition Timer.	287– 8	9.2 Combustion Test.	287– 25
4.6 Gas Analysis System.	287– 8	9.3 Fire Propagation Test.	287– 25
4.7 Combustion Air Distribution System.	287– 9	Annex A Explanatory Material	287– 26
4.8 Water-Cooled Shield.	287– 9	Annex B Background Material	287– 26
4.9 Exhaust System.	287– 9	Annex C Background Information on Exhaust System Option 2	287– 29
4.10 Test Section Instruments.	287– 10	Annex D Informational References	287– 31
4.11 Heat Flux Gauge.	287– 13	Index	287– 32
4.12 Digital Data Collection.	287– 13		
Chapter 5 Calibration of Equipment	287– 18		
5.1 Radiant Flux Heater.	287– 18		
5.2 Gas Analysis Equipment.	287– 18		
5.3 Load Cell.	287– 19		
5.4 Heat Release Calibration.	287– 19		

NFPA 287

Standard Test Methods for

Measurement of Flammability of Materials in Cleanrooms Using a Fire Propagation Apparatus (FPA)

2022 Edition

IMPORTANT NOTE: This NFPA document is made available for use subject to important notices and legal disclaimers. These notices and disclaimers appear in all publications containing this document and may be found under the heading “Important Notices and Disclaimers Concerning NFPA Standards.” They can also be viewed at www.nfpa.org/disclaimers or obtained on request from NFPA.

UPDATES, ALERTS, AND FUTURE EDITIONS: New editions of NFPA codes, standards, recommended practices, and guides (i.e., NFPA Standards) are released on scheduled revision cycles. This edition may be superseded by a later one, or it may be amended outside of its scheduled revision cycle through the issuance of Tentative Interim Amendments (TIAs). An official NFPA Standard at any point in time consists of the current edition of the document, together with all TIAs and Errata in effect. To verify that this document is the current edition or to determine if it has been amended by TIAs or Errata, please consult the National Fire Codes® Subscription Service or the “List of NFPA Codes & Standards” at www.nfpa.org/docinfo. In addition to TIAs and Errata, the document information pages also include the option to sign up for alerts for individual documents and to be involved in the development of the next edition.

NOTICE: An asterisk (*) following the number or letter designating a paragraph indicates that explanatory material on the paragraph can be found in Annex A.

A reference in brackets [] following a section or paragraph indicates material that has been extracted from another NFPA document. Extracted text may be edited for consistency and style and may include the revision of internal paragraph references and other references as appropriate. Requests for interpretations or revisions of extracted text shall be sent to the technical committee responsible for the source document.

Information on referenced and extracted publications can be found in Chapter 2 and Annex D.

Chapter 1 Administration

1.1 Scope.

1.1.1 This standard shall determine and quantify the flammability characteristics of materials containing polymers that are used in cleanroom applications.

1.1.1.1 The propensity of these materials to support fire propagation, as well as other flammability characteristics, are quantified by means of a fire propagation apparatus.

1.1.1.2 Measurements obtained include time to ignition (t_{ign}), chemical (\dot{Q}_{chem}), and convective (\dot{Q}_c) heat release rates, mass loss rates (\dot{m}), and smoke extinction coefficient (D).

1.1.2 This standard includes the following separate test methods:

- (1) The ignition test, which shall be used for the determination of t_{ign}
- (2) The combustion test, which shall be used for the determination of \dot{Q}_{chem} , \dot{Q}_c , \dot{m} , and D
- (3) The fire propagation test, which shall be used for the determination of \dot{Q}_{chem} from burning of a vertical specimen

1.2 Purpose.

1.2.1* The test methods described herein evaluate the suitability of materials and products containing polymers for use in cleanrooms.

1.2.1.1 These test methods also provide the transient response of such materials and products to prescribed heat fluxes in specified inert or oxidizing environments, for use in mathematical modeling.

1.2.1.2 The fire propagation apparatus is also designed to obtain laboratory measurements of generation rates of fire products (CO_2 , CO , and, if desired, gaseous hydrocarbons).

1.2.2 Distinguishing features of the fire propagation apparatus include the following:

- (1) Tungsten–quartz external (isolated) heaters to provide a radiant flux of up to 65 kW/m^2 to the test specimen, this flux remaining constant whether the surface regresses or expands
- (2) Provision for combustion or upward fire propagation in prescribed flows of normal or either oxygen-enriched or oxygen-vitiated air
- (3) The capability of measuring heat release rates and exhaust product flows generated during self-sustained, upward fire propagation on a vertical test specimen 0.305 m high
- (4) The capability for characterization of the smoke yield from a specimen

1.2.3* The test methods are part of a quantitative methodology for assessing the propensity of materials and products used in cleanrooms to support upward fire propagation and to generate effluent, such as smoke.

1.2.3.1 This methodology consists of the correlation of flammability indices resulting from the test methods with corresponding characteristics measured during real-scale fire propagation experiments.

1.2.3.2 Indices resulting from the test methods include critical heat flux (CHF), thermal response parameter (TRP), fire propagation index (FPI), effective heat of combustion (EHC), and smoke yield (y_s) and smoke damage index (S_d).

1.2.3.3 The TRP and CHF indices are obtained from the ignition test, the EHC and y_s indices are obtained from the combustion test, and the FPI is derived from a fire propagation test in air containing 40 percent oxygen.

1.2.4 This standard is composed of three separate test methods that shall be used in conjunction with a fire propagation apparatus as follows:

- (1) The ignition and combustion test methods shall involve the use of horizontal specimens, in normal air, subjected to a controlled external radiant heat flux that shall be set from 0 up to 65 kW/m².
- (2) The ignition test method shall be conducted under ambient conditions, whereas the combustion and fire propagation test methods shall be conducted with a prescribed airflow within a quartz pipe.
- (3) The fire propagation test method shall involve the use of vertical specimens, in air having a 40 percent (by volume) oxygen concentration, subjected to ignition near the base of the specimen from an external radiant heat flux of 50 kW/m² and a pilot flame.

1.2.4.1* The ignition test method shall be used to determine the TRP and CHF of horizontal specimens.

1.2.4.1.1 The TRP shall be determined from changes in the time required for sustained ignition by a pilot flame as a function of the magnitude of a constant, externally applied radiant heat flux.

1.2.4.1.2 The CHF shall be determined from the magnitude of externally applied radiant heat flux below which there is no sustained ignition.

1.2.4.1.3 Measurements also shall be made of the time to initial fuel vaporization.

1.2.4.1.4 The surface of the specimens shall be coated with a thin layer of black paint.

1.2.4.2 The combustion test method shall be used to determine the EHC and y_s , as well as the chemical and convective heat release rates when the horizontal test specimen is exposed to an external radiant heat flux of 50 kW/m² in the apparatus.

1.2.4.3* The fire propagation test method shall be used to determine the FPI of vertical specimens. A 40 percent oxygen concentration in the inflow shall be used to simulate the radiant heat flux from real-scale flames.

1.2.5 The fire propagation test of vertical specimens shall not be used for materials that melt and form a liquid pool while burning.

1.2.6 This standard does not purport to address all safety problems associated with its use. It shall be the responsibility of the user of this standard to establish appropriate safety and health practices.

1.3 Symbols. The following symbols are used in this document:

A_d = cross-sectional area of test section duct (m²)
CHF = critical heat flux (kW/m²)

(continues)

c_p = specific heat of air at constant pressure (kJ/kg K)

D = extinction coefficient obtained from test section duct laser smoke measuring system (m⁻¹)

EHC = effective heat of combustion (kJ/kg)

FPI = fire propagation index (m^{5/3}/kW^{2/3}sec^{1/2})

\dot{G}_{CO} = mass flow rate of CO in test section duct (kg/sec)

\dot{G}_{CO_2} = mass flow rate of CO₂ in test section duct (kg/sec)

I/I_a = ratio of light intensity measured by laser smoke measuring system to the average value before ignition (–)

K = flow coefficient of averaging pitot tube [duct gas velocity / (2Δ p_m/ρ)^{1/2}] (–)

L = light beam path length for laser smoke measuring system in test section duct (m)

M_{loss} = ultimate change in specimen mass resulting from a combustion test (kg)

\dot{m} = mass loss rate of specimen resulting from combustion (kg/sec)

\dot{m}_d = mass flow rate of gases in the test section duct (kg/sec)

P_{atm} = atmospheric pressure (Pa)

p_m = pressure differential across averaging pitot tube in test section duct (Pa)

\dot{Q}_{chem} = chemical heat release rate (kW)

\dot{Q}_c = convective heat release rate (kW)

S_f = smoke damage index (m^{5/3}/kW^{2/3}sec^{1/2})

T_a = average gas temperature in test section duct before ignition (K)

T_d = gas temperature in test section duct (K)

TRP = thermal response parameter (kW · sec^{1/2}/m²)

t = time (sec)

Δt = time between data scans (sec)

\dot{v} = total volumetric flow rate in test section duct (m³/sec)

W = horizontal width of a flat specimen or the circumference of a cable specimen (m)

X_{CO_2} = measured carbon dioxide analyzer reading or mole fraction of carbon dioxide (–)

X_{CO} = measured carbon monoxide analyzer reading or mole fraction of CO (–)

y_s = mass of smoke particulates generated per unit mass of fuel vaporized (–)

Superscripts

\cdot = per unit time (sec⁻¹)

0 = average value before ignition of the specimen

Subscripts

d = test section duct

1.4 Units. The values stated in SI units shall be regarded as the standard.

Chapter 2 Referenced Publications

2.1 General. The documents or portions thereof listed in this chapter are referenced within this standard and shall be considered part of the requirements of this document.

2.2 NFPA Publications. (Reserved)

2.3 Other Publications.

2.3.1 ASTM Publications. ASTM International, 100 Barr Harbor Drive, P.O. Box C700, West Conshohocken, PA 19428-2959.

ASTM E1354, *Standard Test Method for Heat and Visible Smoke Release Rates for Materials and Products Using an Oxygen Consumption Calorimeter*, 2017.

2.3.2 Other Publications.

Merriam-Webster's Collegiate Dictionary, 11th edition, Merriam-Webster, Inc., Springfield, MA, 2003.

Newman, J. S., and J. Steciak, "Characterization of Particulates from Diffusion Flames." *Combustion and Flame*, 67: 55, 1987.

2.4 References for Extracts in Mandatory Sections.

NFPA 289, *Standard Method of Fire Test for Individual Fuel Packages*, 2019 edition.

NFPA 318, *Standard for the Protection of Semiconductor Fabrication Facilities*, 2018 edition.

Chapter 3 Definitions

3.1 General. The definitions contained in this chapter shall apply to the terms used in this standard. Where terms are not defined in this chapter or within another chapter, they shall be defined using their ordinarily accepted meanings within the context in which they are used. *Merriam-Webster's Collegiate Dictionary*, 11th edition, shall be the source for the ordinarily accepted meaning.

3.2 NFPA Official Definitions.

3.2.1 Shall. Indicates a mandatory requirement.

3.2.2 Standard. An NFPA standard, the main text of which contains only mandatory provisions using the word "shall" to indicate requirements and that is in a form generally suitable for mandatory reference by another standard or code or for adoption into law. Nonmandatory provisions are not to be considered a part of the requirements of a standard and shall be located in an appendix, annex, footnote, informational note, or other means as permitted in the NFPA manuals of style. When used in a generic sense, such as in the phrases "standards development process" or "standards development activities," the term "standards" includes all NFPA standards, including codes, standards, recommended practices, and guides.

3.3 General Definitions.

3.3.1 Cleanroom. A room in which the concentration of airborne particles is controlled to specified limits, including areas below the raised floor and above the ceiling grid if these areas are part of the air path and within the rated construction. [318, 2018]

3.3.2 Critical Heat Flux (CHF). The minimum heat flux at or below which there is no ignition.

3.3.3 Effective Heat of Combustion (EHC). The measured heat release divided by the mass loss for a specified time period. [289, 2019]

3.3.4 Fire Propagation Index (FPI). The propensity of a material to support fire propagation beyond the ignition zone in terms of the chemical heat release rate during upward fire propagation and TRP.

3.3.5 Smoke Damage Index (S_f). An indicator of the smoke contamination of the environment during fire propagation.

3.3.6 Smoke Yield (y_s). The mass of smoke particulates generated per unit mass of fuel vaporized.

3.3.7 Thermal Response Parameter (TRP). A material characteristic that gives resistance to ignition upon exposure to a prescribed heat flux.

Chapter 4 Test Apparatus

4.1 General.

4.1.1 Dimensions.

4.1.1.1 When dimensions are stated in the text or in figures, they shall be considered mandatory and shall be followed within a tolerance of 0.5 percent.

4.1.1.2 In addition to this tolerance, cylindrical components meant to fit together shall have a total clearance between the two components of 0.1 percent of the clearance diameter, 0.025 mm.

4.1.2 The apparatus shall consist of the following components, shown in Figure 4.1.2: an infrared heating system, a load cell system, an ignition pilot flame and timer, a product gas analysis system, a combustion air distribution system, a water-cooled shield, an exhaust system, test section instruments, calibration instruments, and a digital data acquisition system.

4.2 Infrared Heating System.

4.2.1* Each of four 241 mm long infrared heaters shall contain six tungsten-filament tubular quartz lamps in a compact reflector body that, for a 120-volt input, shall produce 190 kW/m² of radiant flux in front of the quartz window that covers the lamps.

4.2.1.1 The emitter of each lamp shall be a 127 mm long tungsten filament in an argon atmosphere enclosed in a 9.5 mm outer-diameter clear quartz tube.

4.2.1.2 The emitter shall operate at a minimum of 2475 K for a 120-volt input, to produce a spectral energy peak at 1.15 microns.

4.2.2 Power Controller.

4.2.2.1 The power controller shall maintain the output voltage required by the heater array despite variations in the line voltage and load impedance, through the use of phase angle power control to match the hot/cold resistance characteristics of the tungsten-quartz lamps.

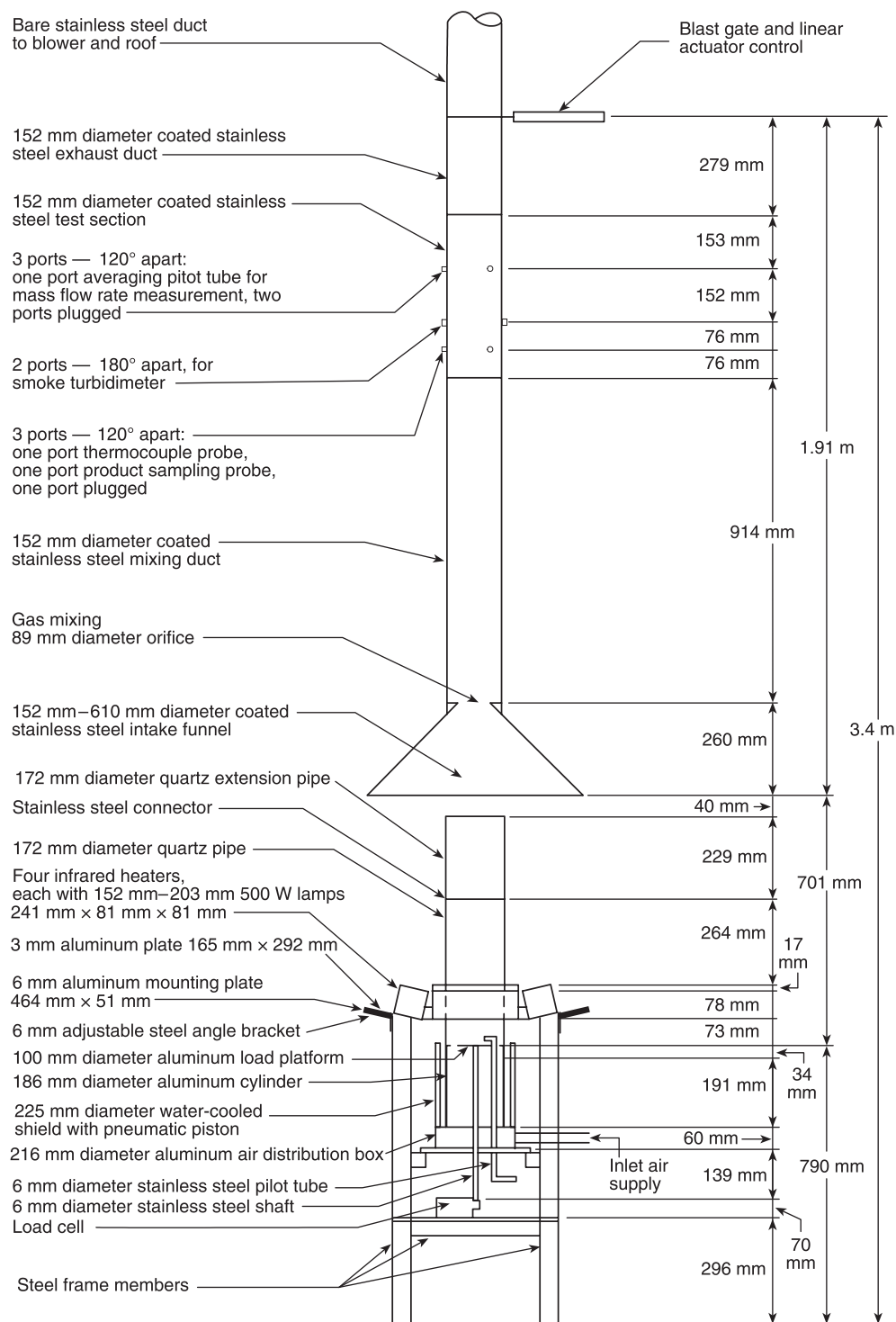


FIGURE 4.1.2 Main View of Apparatus.

4.2.2.2 The controller also shall incorporate average voltage feedback to linearize the relationship between the voltage set by the operator and the output voltage to the lamps.

4.3 Load Cell System.

4.3.1 The load cell system, shown in Figure 4.3.1(a) and Figure 4.3.1(b), shall consist of a load cell, which shall have an accuracy of 0.1 g and a measuring range of 0 g to 1000 g; a 6.35 mm diameter stainless steel shaft at least 330 mm long resting on the load cell support point; a 100 mm diameter, 1.5 mm thick aluminum load platform connected to the upper end of the stainless steel shaft by a collar; and two low-friction, ball-bushing bearings that guide the shaft as it passes through the top and bottom, respectively, of the air distribution chamber.

4.3.2* The stainless steel shaft shall incorporate, at the lower end, a threaded adjustment rod.

4.4 Ignition Pilot Flame. The ignition pilot shall consist of an ethylene-air flame adjusted for a 10 mm length and anchored at the horizontal end of a 50 mm long, 6.35 mm outer diameter (O.D.), 4.70 mm inner diameter (I.D.), stainless steel tube.

4.4.1 The horizontal section of the tube shall contain a four-hole ceramic insert to produce a stable flame and prevent flashback.

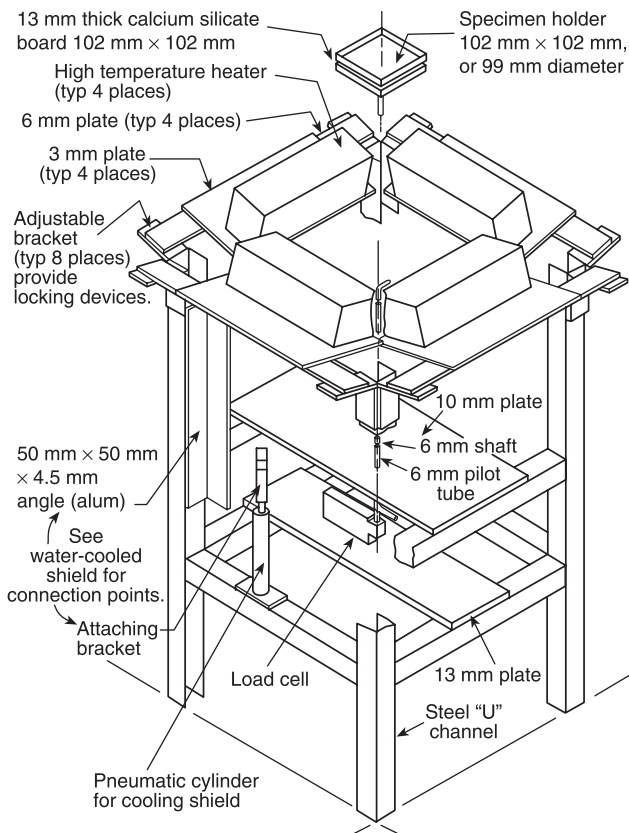


FIGURE 4.3.1(a) Exploded View of Specimen Mounting.

4.4.2 The pilot flame tube shall be able to be rotated and elevated to position the horizontal flame at specified locations near the specimen, as shown in Figure 4.3.1(a) and Figure 4.3.1(b).

4.5 Ignition Timer. The ignition timer for measuring time to sustained flaming shall be capable of recording elapsed time to the nearest tenth of 1 second and have an accuracy of better than 1 second in 1 hour.

4.6 Gas Analysis System.

4.6.1 The gas-sampling arrangement, as shown in Figure 4.6.1, shall consist of a sampling probe in the test section duct, a plastic filter with a pore size of 5 microns to 6 microns to prevent entry of soot, a condenser operating at temperatures in the range of 5°C to 0°C to remove liquids, a tube containing an indicating desiccant 10–20 mesh in size to remove moisture, a cartridge filter, a sampling pump that transports the flow through the sampling line, and a system flowmeter and manifolds to direct the flow to individual CO, CO₂, O₂, and hydrocarbon gas analyzers.

4.6.1.1 The sampling probe, made of 6.35 mm (0.25 in.) O.D. stainless steel tubing inserted through a test section port, shall be positioned so that the open end of the tube is at the center of the test section.

4.6.1.2 The sampling probe shall be connected to a tee fitting that allows either sample or calibration gas to flow to the analyzer and the excess to waste.

4.6.2 The carbon dioxide analyzer shall permit measurements from 0 ppm to 15,000 ppm, and the carbon monoxide analyzer shall permit measurements from 0 ppm to 500 ppm concentration levels.

4.6.2.1 Drift shall be not more than ± 1 percent of full scale over a 24-hour period.

4.6.2.2 Precision shall be 1 percent of full scale, and the 10 percent to 90 percent of full-scale response time shall be 1 second or less.

4.6.3 The inlet-air oxygen analyzer shall have a 10 percent to 90 percent of full-scale response time of 1 second or less, an accuracy of 1 percent of full scale, a drift of not more than ± 50 ppm O₂ over one-half hour, and a range of 0 percent to 50 percent.

4.6.4 An additional oxygen analyzer shall be permitted to measure the depletion of oxygen in the combustion products.

4.6.4.1 This analyzer shall have the same specifications as the inlet-air analyzer but shall have a concentration range of 19 percent to 21 percent.

4.6.4.2 A hydrocarbon gas analyzer shall be permitted to determine the total gaseous hydrocarbon concentration in the combustion products.

4.6.4.3 This analyzer shall employ the flame ionization method of detection, have a 10 percent to 90 percent of full-scale response time of 1 second or less, and have multiple ranges to permit measurements from a full scale of 10 ppm methane equivalent to 10,000 ppm.

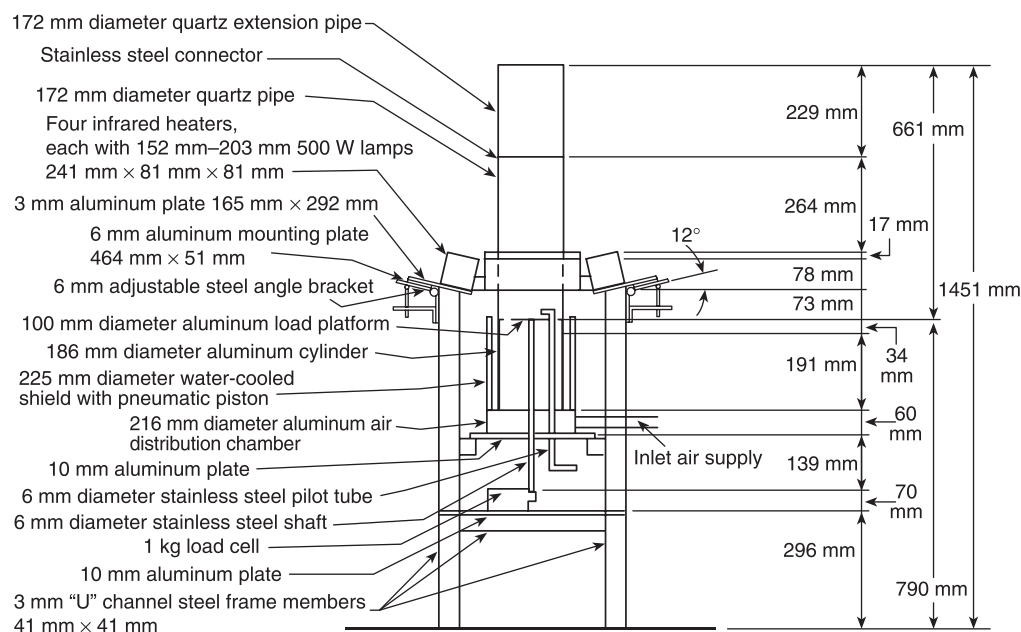


FIGURE 4.3.1(b) Main View of Specimen Mounting.

4.7 Combustion Air Distribution System.

4.7.1* The aluminum air distribution chamber, shown in Figure 4.7.1, shall contain eight discharge tubes arranged in a circle of 165 mm I.D.

4.7.1.1 Each tube shall be aluminum and built to distribute inlet gases to three sets of screens, consisting of stainless steel woven wire cloth of 10, 20, and 30 mesh from bottom to top, respectively, for producing a uniform airflow.

4.7.2 The air supply pipes, shown in Figure 4.7.2, shall consist of an aluminum cylinder extending from the air distribution chamber up to the load platform.

4.7.2.1 This cylinder shall contain a step to support a quartz pipe.

4.7.2.2 Above the load platform elevation, the quartz pipe shall supply oxidant to the specimen flame while allowing radiant energy from the infrared heating system to reach the specimen surface.

4.7.2.3 The aluminum support cylinder shall be rigidly attached to the distribution chamber, with the quartz pipe removable.

4.8 Water-Cooled Shield. The water-cooled shield, shown in Figure 4.8, shall prevent the specimen from being exposed to the infrared heaters during the 1-minute heater stabilization period.

4.8.1 The shield shall consist of two aluminum cylinders welded together with an inlet and outlet for water circulation.

4.8.2 An electrically actuated pneumatic piston shall raise the shield to cover the specimen during test preparation and shall

lower the shield within 1 second to expose the specimen at the start of a test.

4.9 Exhaust System. An exhaust system shall be provided in accordance with 4.9.1 or 4.9.2.

4.9.1 Option 1.

4.9.1.1 The exhaust system shall consist of the following main components: an intake funnel, as shown in Figure 4.9.1.1(a) and Figure 4.9.1.1(b); a mixing duct, as shown in Figure 4.9.1.1(c) and Figure 4.9.1.1(d); a test section, as shown in Figure 4.9.1.1(e); an exhaust duct, as shown in Figure 4.1.2; and a high-temperature blower to draw gases through the intake funnel, mixing duct, test section, and exhaust duct at flow rates from 0.1 m³/sec to 0.3 m³/sec.

4.9.1.2 The intake funnel, mixing duct, test section, and exhaust duct shall be coated internally with a fluorinated polyethylene-polypropylene (FEP) resin enamel and finish layers over a compatible primer, to form a three-layer coating that can withstand temperatures of at least 200°C.

4.9.2* Option 2.

4.9.2.1 The design for the alternative exhaust system shall be as shown in Figure 4.9.2.1.

4.9.2.2 The alternative exhaust system shall have the same type components as those specified in 4.9.1.1 except that the blower shall have a flow capability of 0.1 m³/sec to 0.2 m³/sec, and the mixing orifice shall be 1.6 mm thick and 91.5 mm in diameter instead of that shown in Figure 4.9.1.1(c).

4.9.2.3 The alternative exhaust system shall be operated at a flow rate of 0.15 ± 0.015 m³/sec.

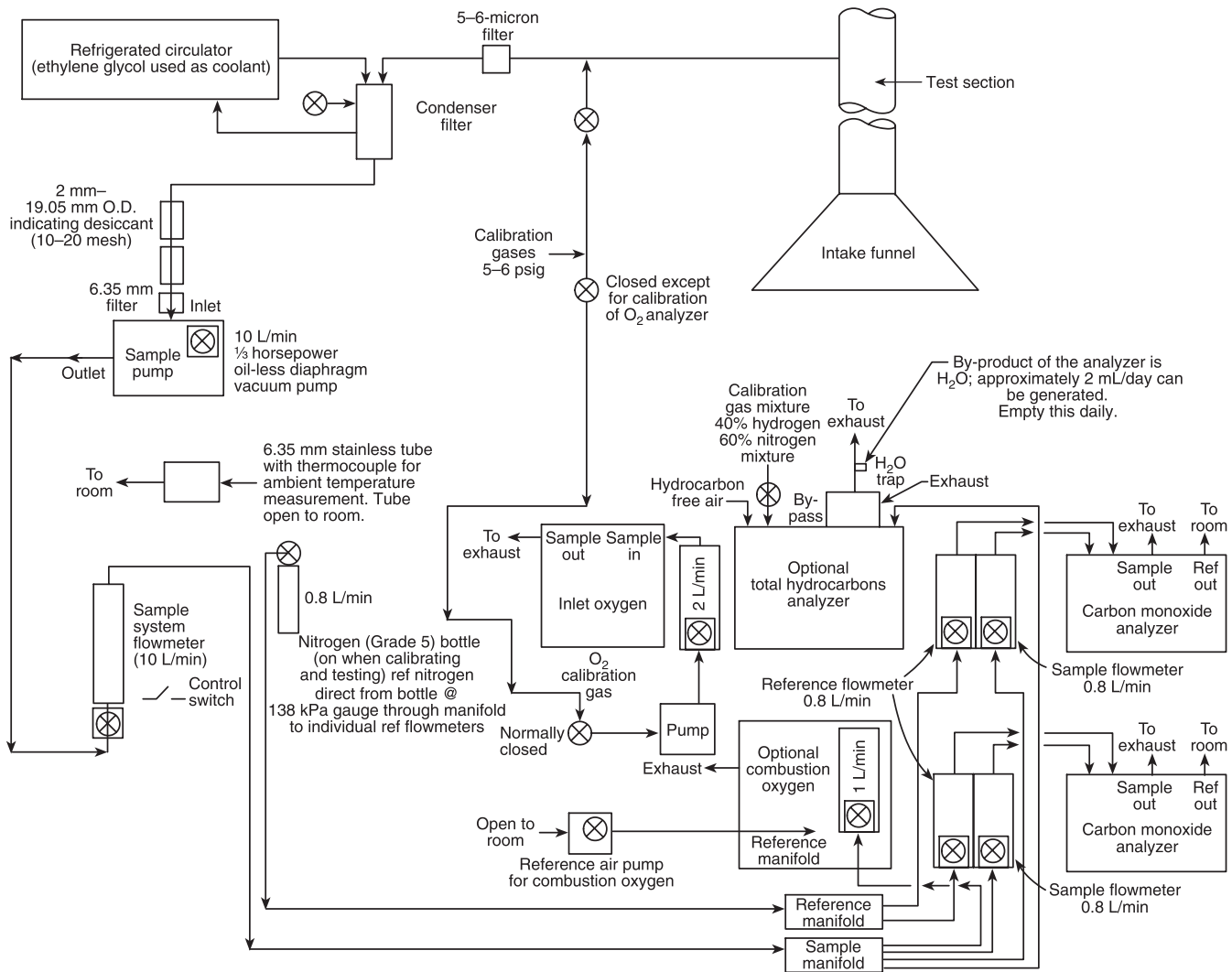


FIGURE 4.6.1 Flow Diagram of Gas-Sampling System.

4.10 Test Section Instruments.

4.10.1 Thermocouple Probe.

4.10.1.1 The thermocouple probe shall be inserted through a test section port and positioned so that the exposed, type K measurement bead is at the center of the test section, at the axial position of the gas-sampling port.

4.10.1.2 The thermocouple probe shall be fabricated of wire no larger than 0.254 mm in diameter for measurement of gas temperature, with a time response in the specified exhaust flow of no more than 1 second and an accuracy of 1°C.

4.10.2* Averaging Pitot Probe and Pressure Transducer. The averaging pitot probe shall be inserted through a test section port 220 mm to 230 mm downstream of the thermocouple port and shall measure the mass flow rate of the gas stream by using at least four sets of flow-sensing openings.

4.10.2.1 One set of openings shall face upstream, and the second set shall face downstream and be designed for compatibility with the test section diameter.

4.10.2.2 The differential pressure generated by the probe shall be measured with an electronic pressure transducer (electronic manometer).

4.10.3* Smoke-Measuring Unit.

4.10.3.1 A laser smoke-measuring system, as shown in Figure 4.10.3.1, shall be used to measure the smoke extinction coefficient; Figure 4.10.3.1 identifies the laser smoke-measuring system and illustrates a cross-section of the test section duct with an optical path length of 0.152 m.

4.10.3.2 The smoke-measuring system shall be installed in the test section duct 230 mm downstream of the gas-sampling port.

4.10.3.3 The smoke-measuring system shall contain the following:

- (1) A 0.5 mW nominal power helium–neon laser that emits light energy at the red wavelength of 0.6328 μm
- (2) Two photodiodes as main and compensating detectors
- (3) Associated electronics including amplifier and power supply

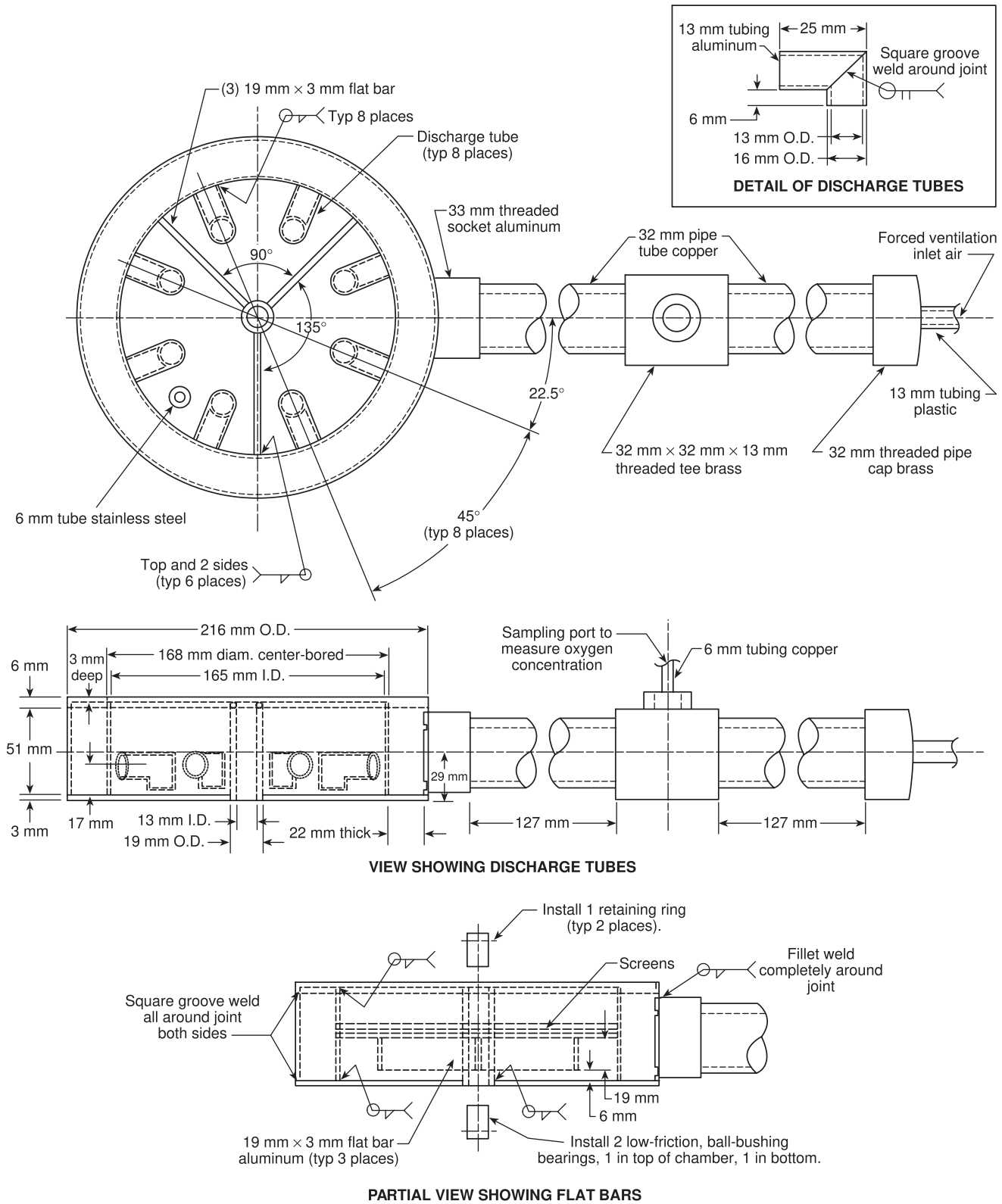


FIGURE 4.7.1 Air Distribution Chamber.

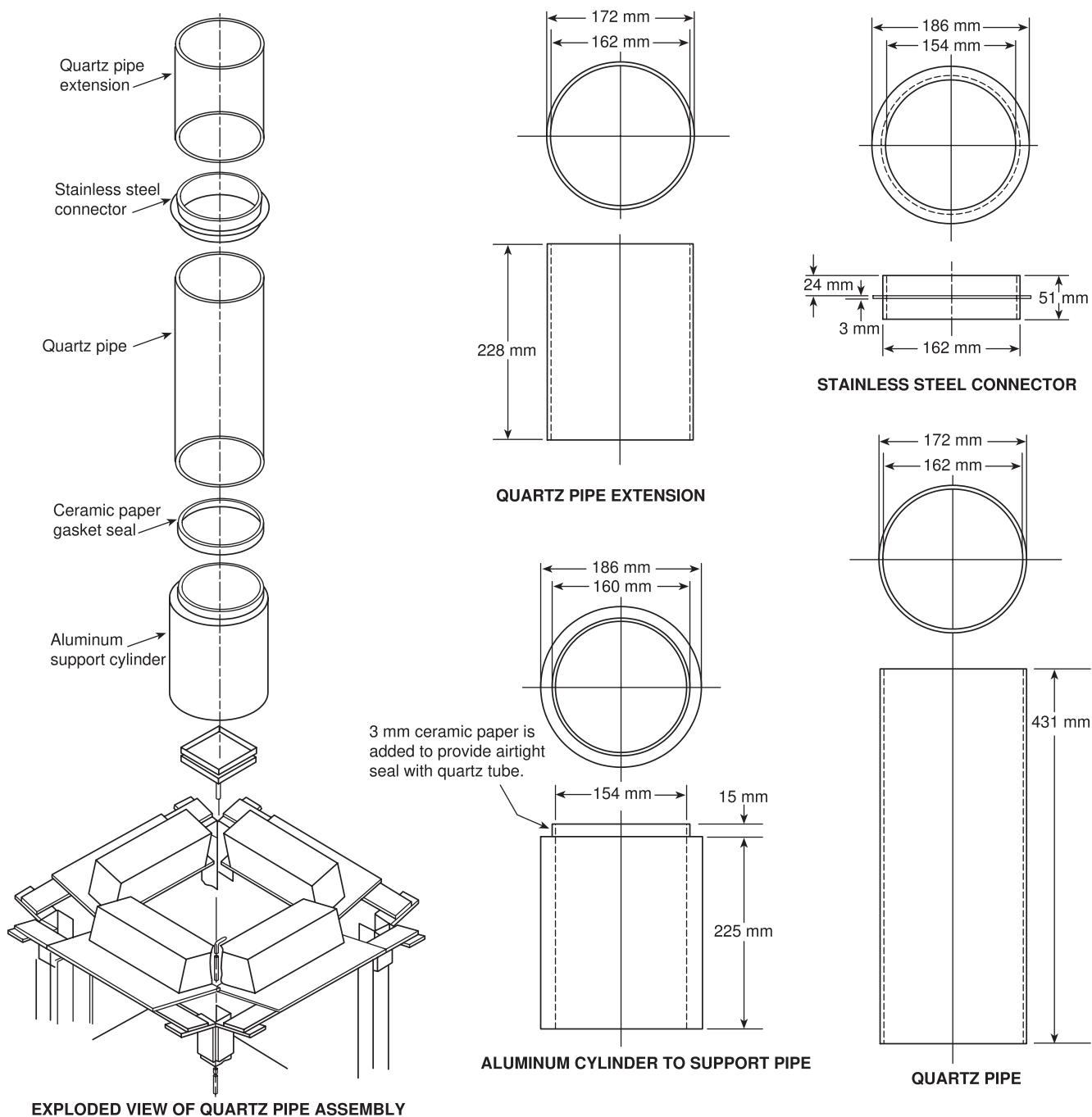


FIGURE 4.7.2 Quartz Pipe Assembly.

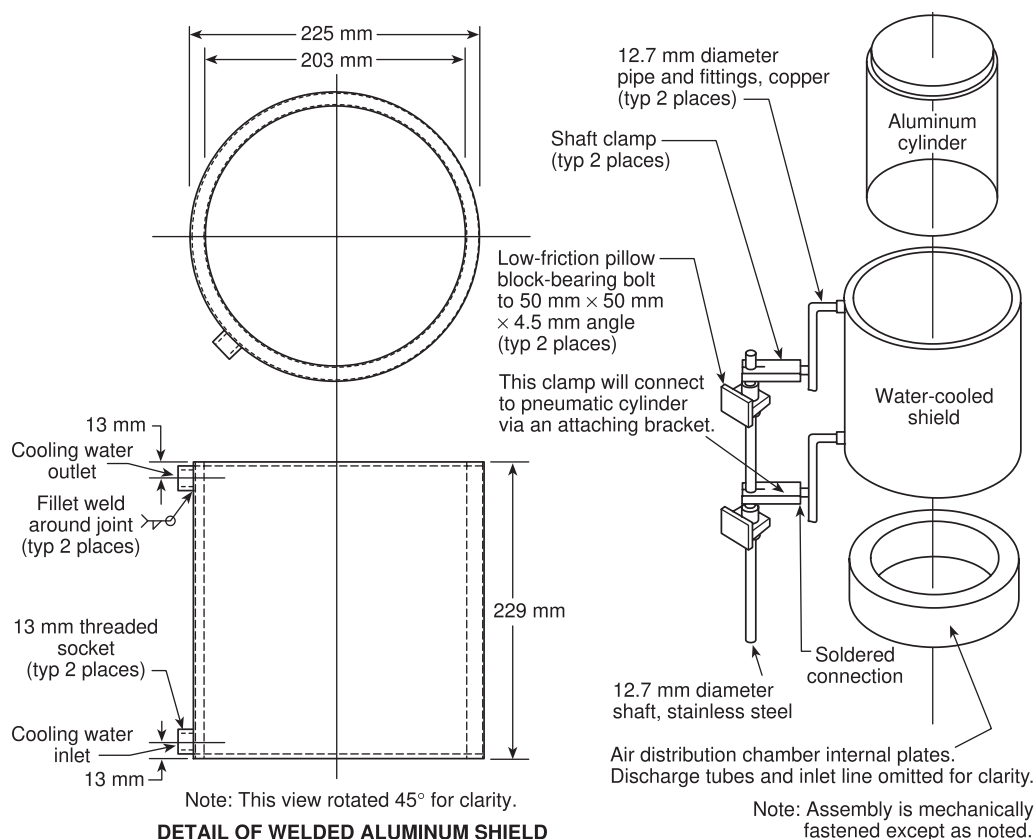


FIGURE 4.8 Water-Cooled Shield.

4.10.3.4 The laser smoke-measuring system shall be fitted to a rigid cradle that serves as an optical bench.

4.10.3.5 The laser system shall be aligned so that the light falls on the photodetector system, which has two signal outputs typically in the range of 0 volts to 2 volts.

4.11 Heat Flux Gauge. The infrared heating system shall be calibrated by using a Gardon-type total heat flux gauge having a nominal range of 0 kW/m² to 100 kW/m² and a flat, 6 mm to 8 mm diameter sensing surface coated with a durable, flat-black finish.

4.11.1 The body of the gauge shall be cooled by water above the dew point of the gauge environment.

4.11.2 The gauge shall be rugged and maintain an accuracy of ±3 percent and a repeatability within 0.5 percent between calibrations.

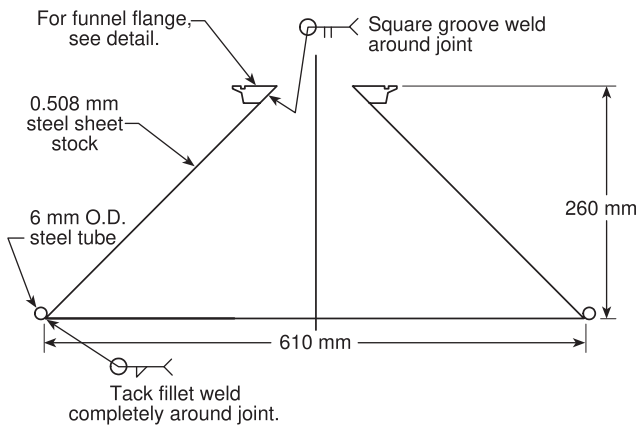
4.11.3 Whenever the infrared heaters are calibrated, the calibration of the heat flux gauge shall be checked through the use of a black-body oven-calibration facility that compares the gauge response to that of an optical pyrometer with a NIST-traceable calibration, or through the use of a facility that compares the gauge output to that of a reference standard.

4.12 Digital Data Collection. The digital data collection system shall be capable of recording the output from the CO, CO₂, hydrocarbon gas, O₂ combustion, and O₂ inlet air analyzers, the load cell, the test section instruments, and the electronic pressure transducer at 1-second intervals.

4.12.1 The data for gas concentrations shall be time-shifted to account for delays within the gas-sampling lines and respective instrument response times.

4.12.2 The data collection system shall have an accuracy corresponding to at least ±1°C for temperature measurement and ±0.01 percent of full-scale instrument output for all other channels.

4.12.3 The system shall be capable of recording data for at least 1 hour at 1-second intervals.



- Notes:
- (1) Inside of funnel is to be coated with FEP after welding.
 - (2) Coat thickness is 0.5 mm.

FIGURE 4.9.1.1(a) Intake Funnel.

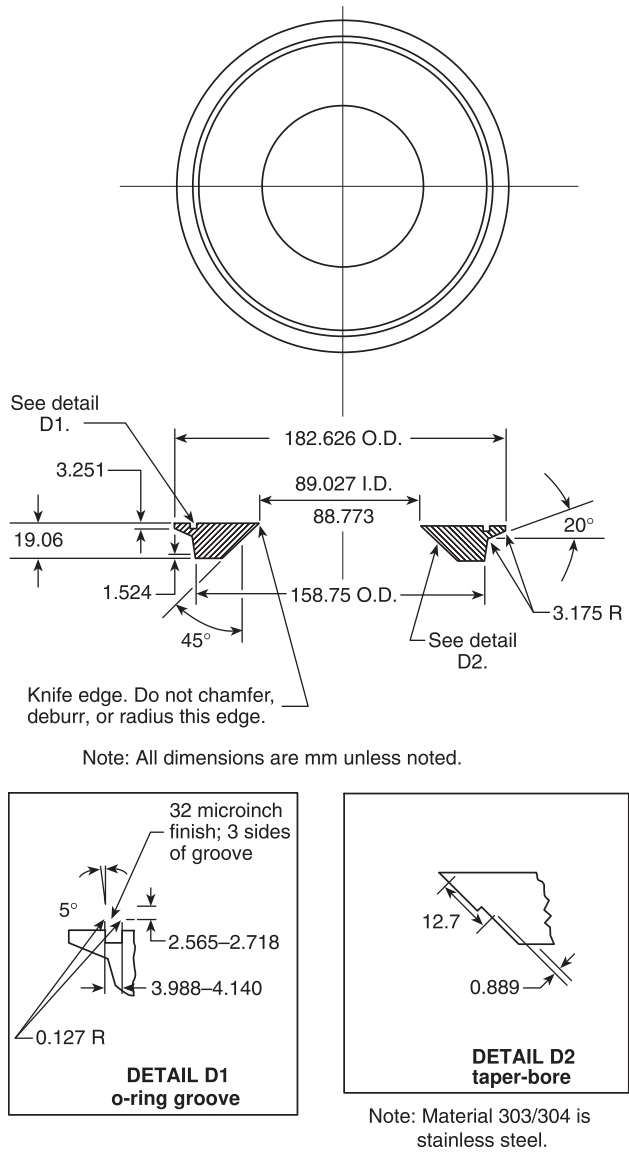
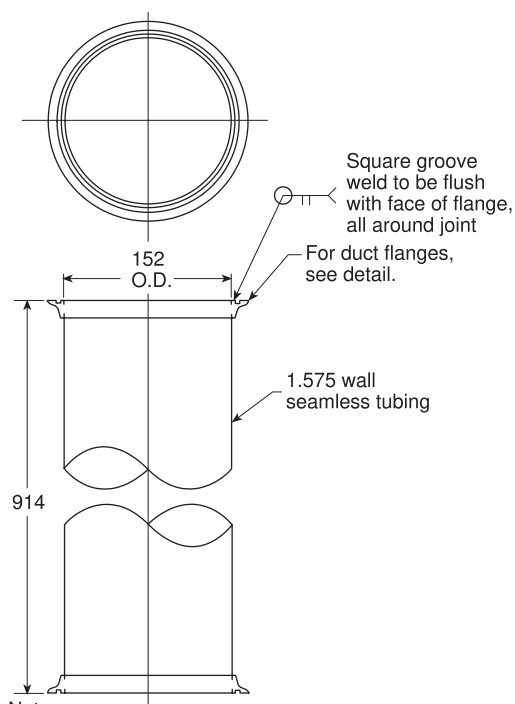
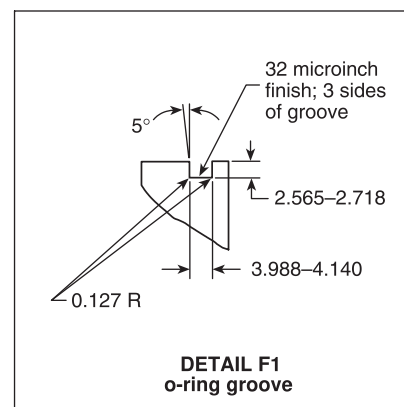
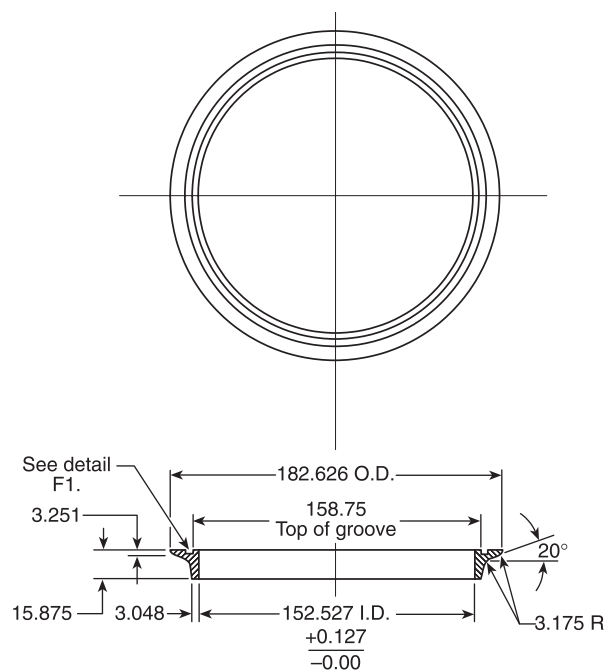


FIGURE 4.9.1.1(b) Funnel Flange.



Notes:

- (1) All dimensions are mm unless noted
- (2) Flanges to be square with tube
- (3) Inside of duct to be coated with FEP after welding
- (4) Material 304 stainless steel

FIGURE 4.9.1.1(c) Mixing Duct.

Notes:

- (1) All dimensions are mm unless noted.
- (2) Material 304 is stainless steel.
- (3) A matching pair consists of 1 flange with o-ring groove and 1 flange without.

FIGURE 4.9.1.1(d) Duct Flanges.

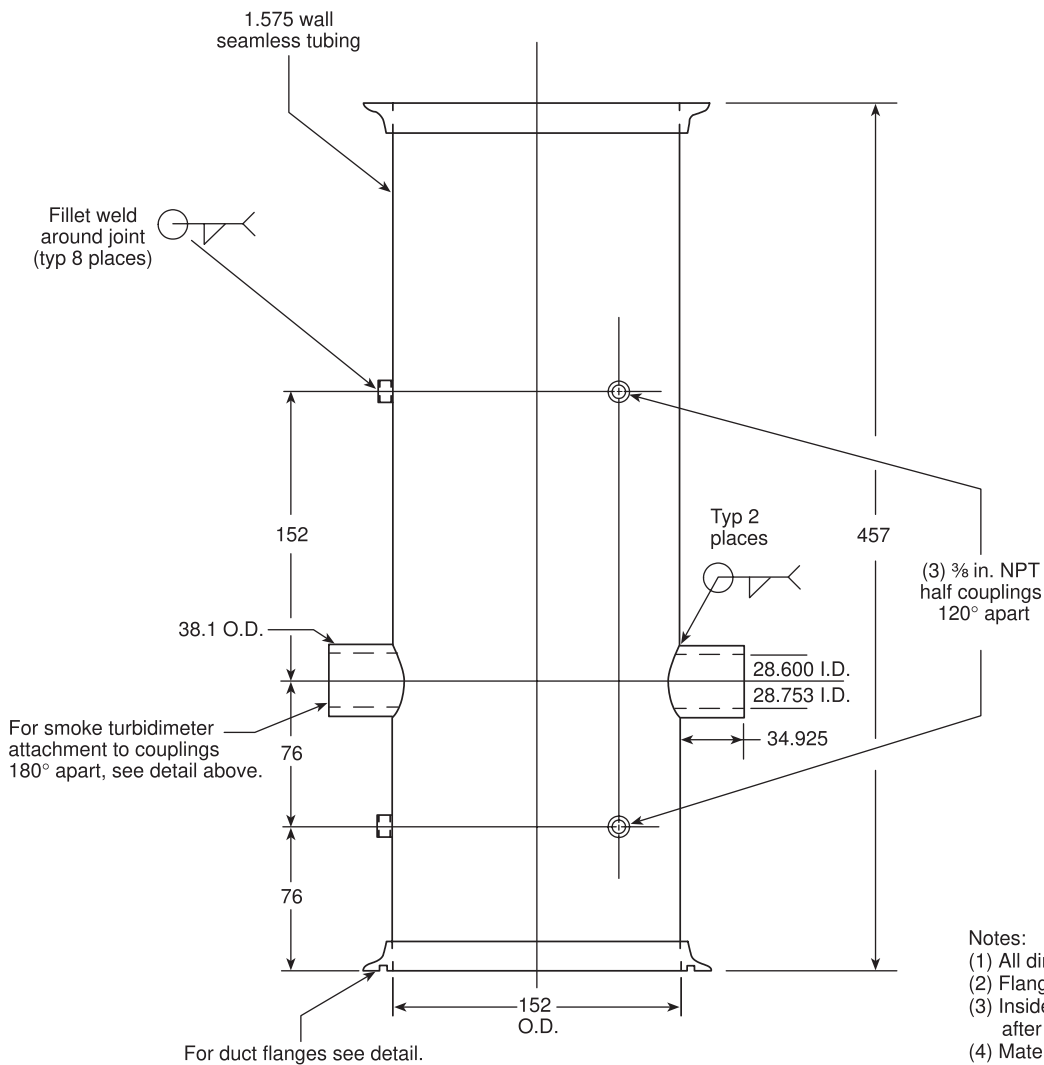
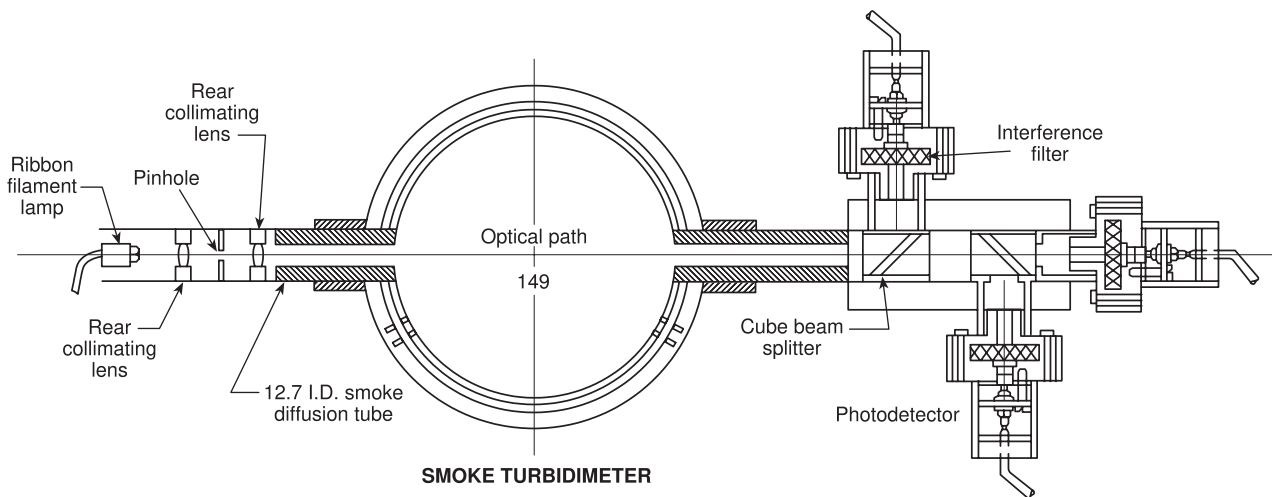
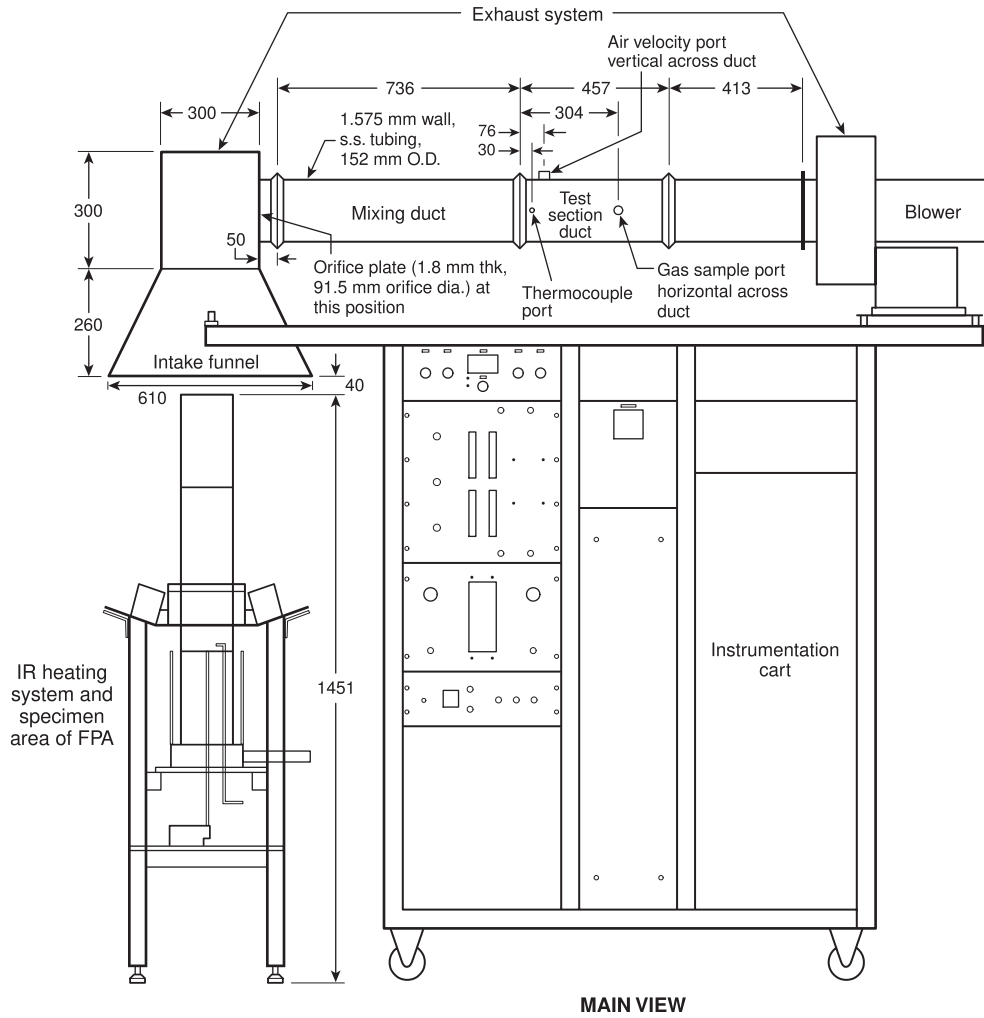


FIGURE 4.9.1.1(e) Test Section.



Note: All dimensions are mm unless noted

FIGURE 4.9.2.1 FPA with Horizontal Exhaust Configuration.

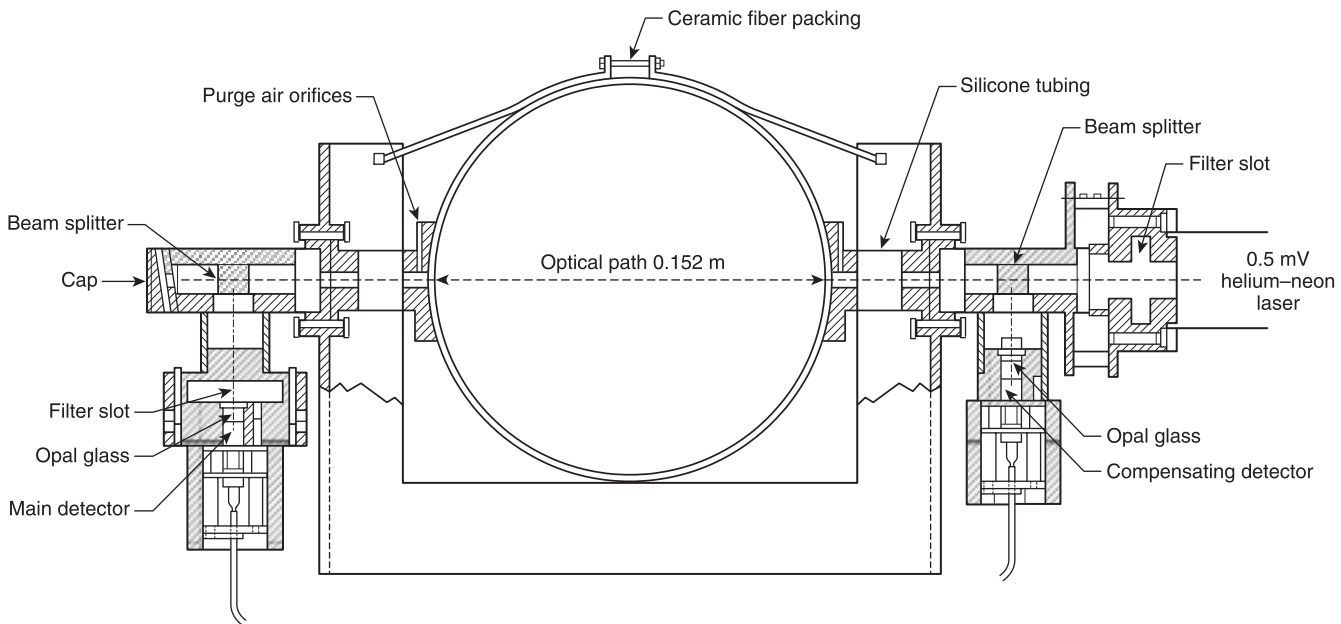


FIGURE 4.10.3.1 Laser Smoke-Measuring Unit.

Chapter 5 Calibration of Equipment

5.1 Radiant Flux Heater.

5.1.1 Infrared heaters shall be calibrated at the start of the test day.

5.1.1.1 The quartz windows, lamps, and back reflective surfaces of the heaters shall be cleaned of any impurity buildup or scratches.

5.1.1.2 The sensing surface of the heat flux gauge shall be positioned to be horizontal, at a location equivalent to the center of the top surface of a horizontal specimen.

5.1.1.3 Calibrations shall be performed, both with and without the quartz pipe in position, by recording infrared heater voltage settings and corresponding heat flux gauge outputs that cover the entire range of flux levels for planned tests.

5.1.2 At least annually, the position of the infrared heaters shall be checked by setting the heater voltage at 90 percent of the maximum value, positioning the heat flux gauge sensing surface to be horizontal, and measuring the heat flux at each of five locations, corresponding to each corner and the center of a square, horizontal specimen, at an elevation equivalent to that of the specimen top surface.

5.1.2.1 The position of each infrared heater shall be adjusted symmetrically, and the heat flux measurements repeated until there is at most a 5 percent mean deviation of the five readings from the average value.

5.1.2.2 Then, the heat flux gauge shall be positioned, with the sensing surface horizontal, to locations equivalent to the vertical axis at the center of a square, horizontal specimen, and the heat flux measured at elevations of 10 mm and 20 mm above and below that equivalent to the specimen top surface.

5.1.2.3 The heat flux at these four elevations shall be checked to ensure that it is within 5 percent of the value at the elevation of the specimen top surface.

5.2 Gas Analysis Equipment.

5.2.1 The gas analysis equipment shall be calibrated before the first combustion or fire propagation test of the day.

5.2.2 Carbon dioxide and carbon monoxide analyzers shall be calibrated for measurement of the combustion gases by establishing a downscale/zero calibration point and an upscale/span calibration point.

5.2.2.1 The upscale calibration shall be performed with a “span gas” at the upper end of the range that will be used during actual sample analysis and with a “zero gas” for the downscale calibration point at the lower end of the analyzer range.

5.2.2.2 Nitrogen shall be used as the “zero gas” reference source by turning on a cylinder of Grade 5 nitrogen.

5.2.3 The oxygen analyzer for the measurement of inlet oxygen concentration and the optional oxygen analyzer for the measurement of combustion gases shall be calibrated by establishing a downscale/zero calibration point and an upscale/span calibration point.

5.2.3.1 The upscale calibration shall be performed with a “span gas” at the upper end of the range that will be used during actual sample analysis and with a “zero gas” for the downscale calibration point at the lower end of the analyzer range.

5.2.3.2 Grade 5 nitrogen shall be used as the “zero gas” reference source.

5.2.3.3 The optional combustion gas oxygen analyzer shall be checked to ensure that the span (upper range) setting does not

change by more than 0.1 percent after the first zero gas (downscale) setting is performed.

5.2.3.4 If the setting does change by more than this amount, then the calibration procedure shall be repeated.

5.2.4 Optional Hydrocarbon Gas Analyzer.

5.2.4.1 The optional hydrocarbon gas analyzer shall be calibrated at the downscale point by using Grade 5 nitrogen as the “zero gas.”

5.2.4.2 Methane at a concentration that matches the operating range of the analyzer shall be used as the “span gas” for the upscale calibration.

5.3 Load Cell. The load cell shall be calibrated each time it is used.

5.3.1 The output voltage shall be set to zero by adjusting the tare, with the appropriate empty specimen holder in position.

5.3.2 A NIST-traceable weight corresponding to the weight of the specimen to be tested shall then be placed on the empty holder, and the output voltage shall be measured.

5.3.3 Linearity shall be checked by repeating this procedure with three other NIST-traceable weights so as to cover the entire specimen weight range.

5.4 Heat Release Calibration.

5.4.1 Measurement Process.

5.4.1.1 The heat release rate measurement process shall be calibrated at least monthly to ensure the proper functioning of the fire propagation apparatus.

5.4.1.2* The measured effective heat of combustion of acetone shall be checked to ensure that it is within 5 percent of the reference value of 27,900 kJ/kg and that the measured total delay (or lag) time of the gas analyzers is less than 15 seconds.

5.4.2 The infrared heaters or the pilot shall not be used.

5.4.3 All other required calibration procedures described in Section 5.4 shall be performed.

5.4.4 Inlet airflow shall be checked to ensure that it is set at 200 ± 20 L/min.

5.4.5 The data acquisition program shall be started.

5.4.6 Acetone in the amount of 100 mL shall be placed in a 97 mm diameter heat-resistant glass specimen dish on the load cell.

5.4.7 The acetone shall be ignited using a match 30 seconds after the start of data acquisition.

5.4.8 Data acquisition shall be ended 2 minutes after the end of visible flaming.

5.4.9 The effective heat of combustion shall be determined in accordance with the calculation procedure in Section 8.4.

5.4.10 The delay time for the gas analyzers shall be determined by computing the difference between the time when the test section duct gas temperature reaches 50 percent of its steady-state value and the time when the reading of each analyzer reaches 50 percent of its steady-state value.

Chapter 6 Test Specimens

6.1 Specimen Holders. Four types of specimen holders shall be permitted: horizontal square; horizontal circular, as shown in Figure 6.1(a); vertical, as shown in Figure 6.1(b); and vertical cable, as shown in Figure 6.1(c).

6.1.1 The horizontal square holder shall consist of two layers of “2 mil” (0.05 mm thickness) aluminum foil molded to the sides and bottom of a square specimen.

6.1.2 The horizontal circular holder shall be a 99 mm diameter aluminum dish.

6.1.3 The vertical specimen holder shall be a 485 mm high \times 133 mm wide ladder rack.

6.1.4 The vertical cable holder shall be 825 mm high, for supporting a cable specimen 810 mm long and up to 51 mm in diameter.

6.2 Conditioning. Specimens shall be conditioned, before surface preparation or testing, to moisture equilibrium at a temperature of $23^{\circ}\text{C} \pm 3^{\circ}\text{C}$ and a relative humidity of $50 \text{ percent} \pm 5 \text{ percent}$ for 24 hours.

6.3 Specimen Size and Preparation.

6.3.1 Ignition and Combustion Tests of Horizontal Specimens. Specimens for the horizontal square holder shall be cut from planar materials or products to be $101.6 \text{ mm} \times 101.6 \text{ mm}$ in area.

6.3.1.1 Square specimens shall have a thickness of no less than 3 mm and no more than 25.4 mm.

6.3.1.2 For materials and products having a thickness greater than 25.4 mm, the unexposed surface shall be cut to reduce the thickness to 25.4 mm.

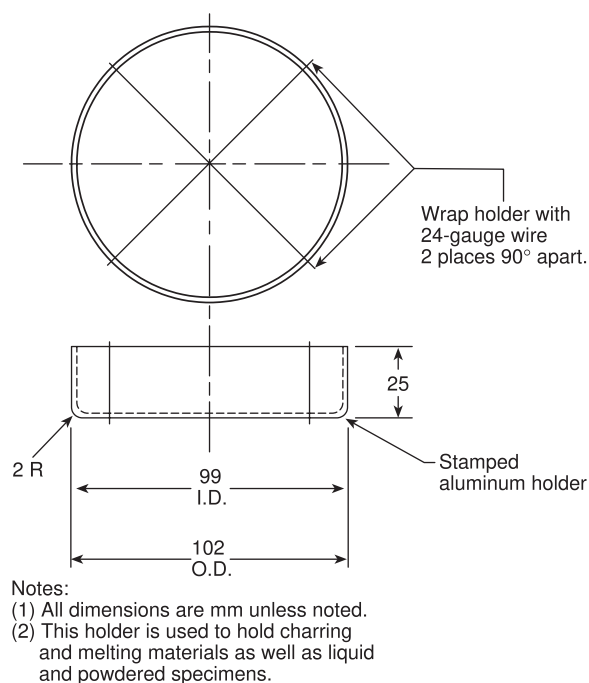
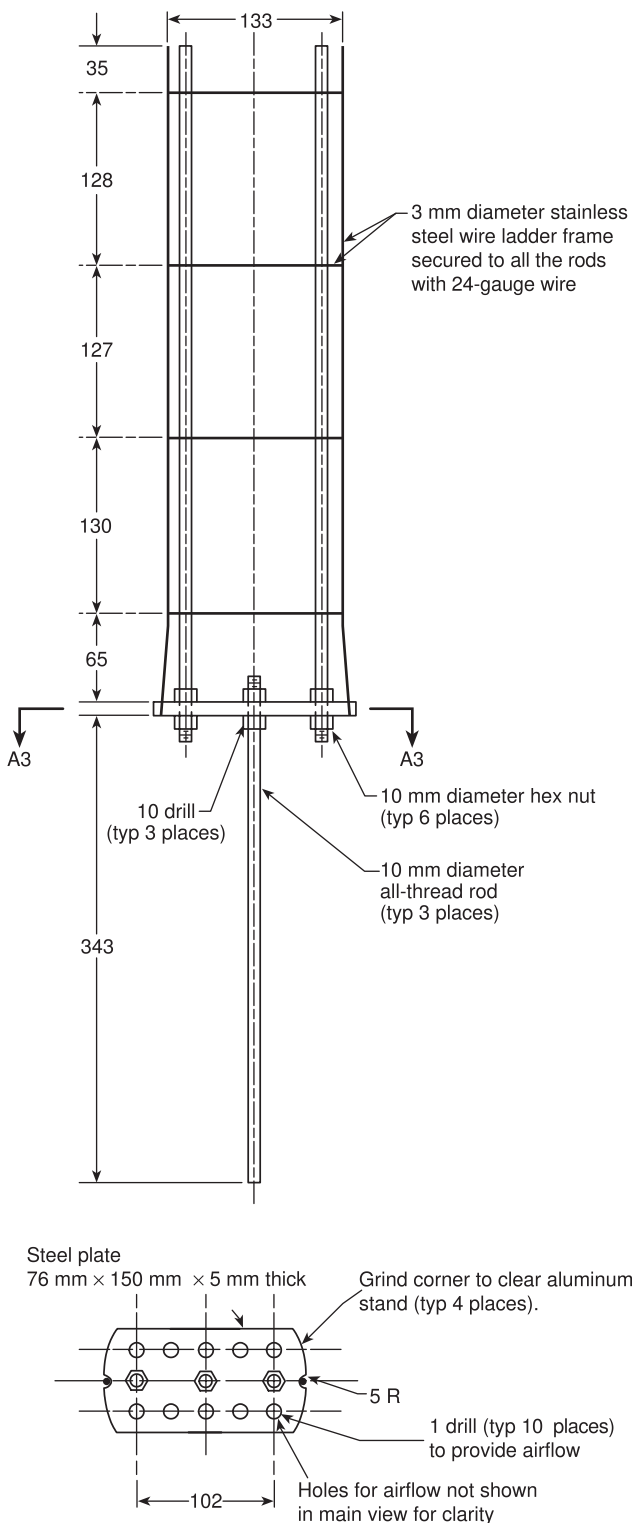


FIGURE 6.1(a) Horizontal Circular Specimen Holder.



Notes:

(1) All dimensions are mm unless noted.

(2) Flat specimen is secured to the ladder frame using 24-gauge wire.

FIGURE 6.1(b) Vertical Specimen Holder.

6.3.1.3 When the ignition test is paired with a fire propagation test, the specimen thickness shall be identical in both tests.

6.3.1.4 Square specimens shall be used with the horizontal square holder.

6.3.1.5 Granular specimens shall be used with the horizontal circular holder by filling the aluminum dish.

6.3.1.6 Cable specimens shall be used with the horizontal circular holder by cutting them to cover the center and at least 20 mm on each side of the center of the aluminum dish.

6.3.1.7 The exposed top surface of square, granular, and cable specimens shall be sprayed with a single coat of flat black paint that is designed to withstand temperatures up to $540^{\circ}\text{C} \pm 10^{\circ}\text{C}$.

6.3.1.8* The paint coating shall be cured by conditioning the specimen at a temperature of $23^{\circ}\text{C} \pm 3^{\circ}\text{C}$ and a relative humidity of 50 percent ± 5 percent for 48 hours.

6.3.1.9 Before testing, the holder containing the specimen shall be placed on a 13 mm thick calcium silicate board having a density of 700 kg/m^3 to 750 kg/m^3 , a thermal conductivity of 0.11 W/mK to 0.13 W/mK , and the same dimensions as the holder, as shown in Figure 6.1(a).

6.3.2 Fire Propagation Test of Vertical Specimens. Vertical specimens shall be cut from planar materials or products to be 101.6 mm in width and 305 mm in height.

6.3.2.1 Vertical specimens shall have a thickness of no less than 3 mm and no more than 13 mm.

6.3.2.2 For materials and products having a thickness greater than 13 mm, the unexposed surface shall be cut to reduce the thickness to 13 mm.

6.3.2.3 When the fire propagation test is paired with an ignition test, the specimen thickness shall be identical in both tests.

6.3.2.4 Ceramic paper having a density 190 kg/m^3 to 200 kg/m^3 and a thickness of 3.2 mm shall be placed to cover the sides and back surface of the vertical specimen.

6.3.2.5 Two layers of "2 mil" (0.05 mm) thickness aluminum foil shall then be molded to the ceramic paper on the sides and back surface of the vertical specimen, thereby leaving the front surface of the specimen exposed for testing.

6.3.2.6 Following this preparation, the bottom of the vertical specimen shall be placed on the metal baseplate of the vertical holder shown in Figure 6.1(b), with the covered (back) surface of the specimen against the ladder rack.

6.3.2.7 To secure the specimen to the vertical specimen holder, 24 gauge nickel-chromium wire shall be wrapped three turns around the vertical specimen, the ladder rack, and the threaded rods, at distances of 100 mm and 200 mm from the bottom of the specimen.

6.3.2.8 Cable specimens shall be mounted as shown in Figure 6.1(c).

6.4 Mounting Methods. The exact mounting and retaining methods used shall be specified in the test report if different from the techniques in Section 6.3.



Chapter 7 Test Procedure

7.1 Procedure 1: Ignition Test. The ignition test shall be performed to determine the TRP, and the CHF of a material, through measurement of the ignition time over a range of external heat fluxes.

7.1.1 Nitrogen for extinguishing flames shall be ready to flow at 100 L/min \pm 10 L/min, and cylinders of compressed ethylene and air shall be available to give the specified pilot flame when needed.

7.1.2 The 13 mm thick calcium silicate board supporting the appropriate horizontal specimen holder shall be centered on the aluminum load platform with no quartz pipe in place, to ensure natural airflow.

7.1.3 The exhaust blower shall be turned on.

7.1.4 The pilot flame shall be ignited and adjusted for a 10 mm flame length.

7.1.5 The lighted pilot flame shall be moved to a position 10 mm above the specimen surface and 10 mm radially in from the perimeter of the specimen.

7.1.6 The air and water supplies shall be turned on to cool the infrared heaters.

7.1.7 The water-cooled shield surrounding the specimen holder shall be raised to prevent specimen exposure to external heat flux.

7.1.8 The infrared heater voltage shall be set to produce a 30 kW/m² exposure on the specimen surface, and the infrared heater shall be allowed to stabilize for 1 minute.

7.1.9 The water-cooled shield shall be lowered to expose the sample to the external heat flux, and the ignition timer shall be started.

7.1.10 The time at the first appearance of vapors from the specimen shall be recorded, and the time to ignition shall be recorded as the time from exposure to the external heat flux until a sustained flame is established for at least a 4-second duration.

7.1.11 Nitrogen shall be introduced to extinguish flames.

7.1.12* The specimen shall be removed to a ventilated environment.

7.1.13 The procedures of 7.1.1 through 7.1.12 shall be repeated for infrared heater settings of 35 kW/m², 40 kW/m², 45 kW/m², 50 kW/m², 55 kW/m², and 60 kW/m².

7.1.14 If the specimen ignites at 30 kW/m² within 15 minutes, the same procedure shall be repeated at 25 kW/m², 20 kW/m², 15 kW/m², and 10 kW/m², in that order, until there is no ignition for 15 minutes.

7.2 Procedure 2: Combustion Test. The combustion test shall be conducted to determine the EHC and the y_g and to measure the chemical and convective heat release rates, \dot{Q}_{chem} and \dot{Q}_c .

7.2.1 Gas-Sampling System.

7.2.1.1 The gas-sampling system shall be removing all water vapor and other condensable combustion products.

7.2.1.2 If the sampling system flowmeter indicates a flow of less than 10 L/min, then the sampling system filter elements shall be replaced.

7.2.2 Fresh indicating desiccant and a soot filter shall be installed in the gas-sampling line.

7.2.3 The flame in the hydrocarbon gas analyzer shall be ignited, and the flameout indicator on the front panel shall be checked to ensure that there is flame ignition.

7.2.4 Nitrogen for extinguishing flames shall be ready to flow at 100 L/min \pm 10 L/min, and cylinders of compressed ethylene and air shall be available to produce the specified pilot flame when needed.

7.2.5 Power.

7.2.5.1 The gas-sampling pump to oxygen, carbon monoxide, carbon dioxide, and hydrocarbon gas analyzers shall be turned on, and correct flow rates shall be set for each instrument.

7.2.5.2 Gas analyzers shall be powered on at all times to maintain constant internal temperatures.

7.2.6 The required calibration procedures shall be performed, as specified in Chapter 5.

7.2.7 The exhaust and air supply blowers servicing the apparatus shall be turned on.

7.2.8 The 13 mm thick calcium silicate board supporting the appropriate horizontal specimen holder shall be centered on the aluminum load platform.

7.2.9 The pilot flame shall be ignited and adjusted for a 10 mm flame length.

7.2.10 The lighted pilot flame shall be moved to a position 10 mm above the specimen surface and 10 mm radially in from the perimeter of the specimen.

7.2.11 The air and water supplies shall be turned on to cool the infrared heaters.

7.2.12 The quartz pipe shall be installed on the mounting step in the aluminum oxidant supply pipe.

7.2.13 The water-cooled shield surrounding the specimen holder shall be raised to prevent exposing the specimen to the external heat flux.

7.2.14 The inlet airflow shall be set at 200 \pm 20 L/min and the exhaust flow rate set at 0.25 \pm 0.025 m³/sec.

7.2.15 The infrared heater voltage shall be set to expose the specimen surface to 50 kW/m² and shall be allowed to stabilize for 1 minute.

7.2.16 The data acquisition system shall be started.

7.2.17 Thirty to thirty-five seconds after the start of data acquisition, the water-cooled shield shall be lowered to expose the specimen to the infrared heaters.

7.2.18 The following shall be recorded:

- (1) Time at the first appearance of vapors from the specimen
- (2) Time at ignition
- (3) Flame height
- (4) Flame color and smokiness
- (5) Any unusual flame behavior
- (6) Time at flame extinction

7.2.19 If flames reach $35 \text{ mm} \pm 10 \text{ mm}$ above the rim of the collection funnel for more than 30 seconds, they shall be extinguished by introducing nitrogen.

7.2.20 Data acquisition shall be continued for a period of 2 minutes after specimen flaming has ceased.

7.2.21 The specimen shall be removed from the specimen holder and weighed, and the residue mass shall be recorded when the specimen has cooled.

7.2.22 The procedures in 7.2.1 through 7.2.21 shall be repeated to give at least three determinations of the heat release rate, mass loss rate, and smoke yield.

7.3 Procedure 3: Fire Propagation Test. The fire propagation test shall be performed to determine the FPI of a material, through measurement of the chemical heat release rate of a vertical specimen during and after upward fire propagation.

7.3.1 The procedures in 7.2.1 through 7.2.7 for measurement of heat release rate, with the exception of the load cell calibration, shall be repeated.

7.3.2 The stainless steel load cell shaft and the ball-bushing bearings in the air distribution chamber shall be removed and replaced with the appropriate vertical specimen holder, and the specimen shall be installed, so that the bottom edge of the vertical specimen that is to be exposed to external heat flux is at an elevation equivalent to that of the top surface of a horizontal specimen.

7.3.3 The pilot flame shall be ignited and adjusted for a 10 mm flame length.

7.3.4 The exhaust and air supply blowers servicing the apparatus shall be turned on, and a cylinder of Grade 2.6 oxygen shall be connected to the inlet air supply line.

7.3.5 The air and water supplies shall be turned on to cool the infrared heaters.

7.3.6 The quartz pipe shall be installed on the mounting step in the aluminum oxidant supply pipe.

7.3.7 The water-cooled shield surrounding the specimen holder shall be raised to prevent exposing the specimen to the external heat flux.

7.3.8 The pilot flame shall be moved to a position 75 mm above the bottom of the specimen and 10 mm away from the specimen surface.

7.3.9 The inlet air/oxygen flow shall be set at $200 \text{ L/min} \pm 20 \text{ L/min}$, the inlet oxygen concentration at 40 percent, and the exhaust flow rate at $0.25 \text{ m}^3/\text{sec} \pm 0.025 \text{ m}^3/\text{sec}$.

7.3.10 The infrared heater voltage shall be set to produce 50 kW/m^2 and allowed to stabilize for 1 minute.

7.3.11 The data acquisition program shall be started.

7.3.12 Thirty to thirty-five seconds after the start of data acquisition, the water-cooled shield shall be lowered to expose the lower portion of the vertical specimen to the infrared heaters, and the ignition timer shall be started.

7.3.13 The base area of the specimen shall be preheated for 1 minute.

7.3.13.1 If ignition and fire propagation have not already occurred, the pilot flame shall be moved into contact with the

specimen surface 75 mm above the bottom of the specimen to initiate fire propagation.

7.3.13.2 The pilot flame shall then be moved away from the specimen.

7.3.14 The chemical heat release rate shall be measured as a function of time during and after fire propagation, using the combustion test procedures.

7.3.15 The following shall be recorded: the time at the first appearance of vapors from the specimen, the time at ignition, the flame height at 1-minute intervals, the flame color and smokiness, any unusual flame behavior, and the time at flame extinction.

7.3.16 The test shall be terminated 2 minutes after the end of visible flaming or if flames reach $35 \text{ mm} \pm 10 \text{ mm}$ above the rim of the collection funnel for more than 30 seconds or if the specimen undergoes noticeable structural deformation.

7.3.17 The procedures in 7.3.1 through 7.3.16 shall be repeated to give at least three heat release rate determinations.

7.4 Safety Precautions. All normal laboratory safety precautions shall be followed.

7.4.1* During the test, the operator shall use hearing protection and at least shade 5 welding goggles or glasses.

7.4.1.1 The operator shall use protective gloves to insert and remove test specimens.

7.4.1.2 The specimen residue shall be transferred to a fume hood.

7.4.1.3 Neither the infrared heaters nor the associated fixtures shall be touched while they are hot except with protective gloves.

7.4.2 Exhaust System.

7.4.2.1 The exhaust shall be checked for proper operation before testing and shall be discharged away from intakes for the building ventilation system.

7.4.2.2 Provision shall be made for collecting and venting any combustion products that fail, for whatever reason, to be collected by the normal exhaust system of the apparatus.

Chapter 8 Calculations

8.1 Critical Heat Flux (CHF). The CHF shall be the intercept with the ordinate of a straight-line regression fit to data on external heat flux (from the infrared heaters) versus the inverse of time to ignition.

8.1.1 Data shall be from the four lowest values for heat flux (e.g., 30 kW/m^2 , 25 kW/m^2 , 20 kW/m^2 , and 15 kW/m^2) in the ignition test.

8.1.2 The standard deviation (or standard error) of the intercept due to data scatter shall be within 10 percent of the regression fit intercept.

8.1.3 Additional data shall be obtained if the standard deviation exceeds this limit.

8.2 Thermal Response Parameter (TRP). The TRP shall be the slope of a straight-line regression fit to data on external

heat flux (from the infrared heaters) versus the inverse of the square root of the time to ignition.

8.2.1 Data shall be from the four highest values for external heat flux (e.g., 45 kW/m², 50 kW/m², 55 kW/m², and 60 kW/m²) in the ignition test.

8.2.2 The standard deviation (or standard error) of the slope due to data scatter shall be within 10 percent of the regression fit slope.

8.2.3 Additional data shall be obtained if the standard deviation exceeds this limit.

8.3 Fire Propagation Index (FPI).

8.3.1 The FPI shall be determined from the fire propagation and ignition tests by using the following equation:

[8.3.1]

$$\text{FPI} = \frac{1000 \left(\frac{0.42 \dot{Q}_{chem}}{W} \right)^{1/3}}{\text{TRP}}$$

where \dot{Q}_{chem} shall be obtained from the fire propagation test and TRP from the ignition test.

8.3.2 The chemical heat release rate shall be determined from the following equation:

[8.3.2]

$$\dot{Q}_{chem} = 13,300 (\dot{G}_{CO_2} - \dot{G}_{CO_2}^0) + 11,100 (\dot{G}_{CO} - \dot{G}_{CO}^0)$$

8.3.3 The mass flow rates of CO₂ and CO shall be determined from the following equations, where 353 (kg K/m³) is the product of air density and temperature at normal atmospheric pressure.

[8.3.3a]

$$\dot{G}_{CO_2} = A_d K \left(\frac{P_{atm}}{101,000} \right)^{1/2} \left[2 \left(\frac{353 \Delta p_m}{T_d} \right) \right]^{1/2} (0.152 X_{CO_2})$$

[8.3.3b]

$$\dot{G}_{CO} = A_d K \left(\frac{P_{atm}}{101,000} \right)^{1/2} \left[2 \left(\frac{353 \Delta p_m}{T_d} \right) \right]^{1/2} (0.966 X_{CO})$$

8.4 Effective Heat of Combustion (EHC). The EHC shall be determined from the following equation:

[8.4]

$$\text{EHC} = \frac{\sum \dot{Q}_{chem} \Delta t_i}{M_{loss}}$$

where the summation shall be taken over all combustion test data scans and \dot{Q}_{chem} shall be obtained from 8.3.2 and 8.3.3.

8.5 Smoke Calculations.

8.5.1 The optical density in the test section duct shall be determined from the following equation:

[8.5.1]

$$D = \ln \left(\frac{I_0}{I} \right) / L$$

where:

D = optical density (m⁻¹) at laser wavelength of 0.6328 μm

I_0/I = fraction of light transmitted through smoke

L = optical path length (m)

8.5.2 The volume fraction of smoke, f_v , shall be obtained from the following expression (Newman and Steciak, "Characterization of Particulates from Diffusion Flames," 1987):

[8.5.2]

$$f_v = \frac{D \lambda \times 10^{-6}}{c}$$

where:

λ = wavelength of the light source (μm)

c = coefficient of smoke extinction taken as 7

8.5.3 The mass generation rate (kg/m²sec) of smoke shall be given by the following:

[8.5.3a]

$$\dot{G}_s'' \frac{f_v \dot{v} \rho_s}{A} = \left(\frac{D \lambda}{7} \right) \left(\frac{\rho_s \dot{v} \times 10^{-6}}{A} \right)$$

where:

\dot{v} = volumetric flow rate in the test section duct (m³/sec)

A = burning sample surface area (m²)

ρ_s = value of smoke density taken as 1.1 × 10³ kg/m³ with a laser wavelength of 0.6328 μm

Substituting these values provides a mass generating rate of smoke, as follows:

[8.5.3b]

$$\dot{G}_s'' = 0.0994 \times 10^{-3} \left(\frac{D \dot{v}}{A} \right)$$

8.5.4 The total smoke generated, W_s (kg), shall be obtained by the summation of the generation rate from ignition to flame-out times as follows:

[8.5.4]

$$W_s = A \sum \dot{G}_s''(t_n) \Delta t_n$$

8.5.4.1 The total mass loss, W_m (kg), shall be calculated by the summation of the mass loss rate, \dot{m}'' (kg/m² sec) from ignition to flameout times, as follows:

$$W_m = A \sum_{n=t_{ig}}^{n=t_{fo}} \dot{m}''(t_n) \Delta t_n \quad [8.5.4.1]$$

8.5.5 The average value of smoke yield, \bar{Y}_s , shall be determined as follows:

$$\bar{Y}_s = \frac{W_s}{W_m} \quad [8.5.5]$$

8.5.6 The average value of smoke yield, \bar{Y}_s , shall also be permitted to be obtained from the average specific extinction area, $\bar{\tau}$ (m²/kg) at the same laser wavelength of 0.6328 μm (ASTM E1354, *Standard Test Method for Heat and Visible Smoke Release Rates for Materials and Products Using an Oxygen Consumption Calorimeter*). The average specific extinction area can be determined as follows:

$$\bar{\tau} = \frac{\sum \dot{V}_t D_t \Delta t_t}{W_m} \quad [8.5.6]$$

8.5.6.1 Using the expression for average specific extinction area, the average smoke yield shall be calculated as follows:

$$\bar{Y}_s = 0.0994 \times 10^{-3} \bar{\tau} \quad [8.5.6.1]$$

8.5.7 Smoke damage index (S_i) shall be calculated as:

$$S_i = y_s * \text{FPI} \quad [8.5.7]$$

8.6 Convective Heat Release Rate.

8.6.1 The convective heat release rate shall be determined from the following equation:

$$\begin{aligned} \dot{Q}_c &= m_d c_p (T_d - T_a) \\ &= A_d K \left(\frac{P_{atm}}{101,000} \right)^{1/2} \left[2 \left(\frac{353 p_m}{T_d} \right) \right]^{1/2} c_p (T_d - T_a) \end{aligned} \quad [8.6.1]$$

where all terms in this equation shall be evaluated from combustion test data scans.

8.6.2 The gas specific heat shall be corrected for temperature by the following equation:

$$c_p = 1.00 + 1.34 \left(10^{-4} T_d - \frac{2590}{T_d^2} \right) \quad [8.6.2]$$

Chapter 9 Report

9.1 General Test Description and Ignition Test. The following information shall be provided in a test report:

- (1) Specimen identification code or number
- (2) Manufacturer or name of organization submitting specimen
- (3) Date of test
- (4) Operator of apparatus
- (5) Composition or generic identification of specimen
- (6) Specimen thickness and dimensions of specimen surface exposed to infrared heaters (mm)
- (7) Specimen mass (kg)
- (8) Specimen orientation, specimen holder, and description of special mounting procedures
- (9) Room temperature (°C) and relative humidity (percent)
- (10) Radiant flux from infrared heating system applied to test specimen (kW/m²)
- (11) Time when vapors are first observed coming from the test specimen (sec)
- (12) Time at which there is sustained flaming (sec)
- (13) Thermal response parameter (kW·sec^{1/2}/m²)
- (14) Critical heat flux (kW/m²)
- (15) Additional observations (including times of transitory flaming, flashing, or melting)

9.2 Combustion Test. In addition to the information in Section 9.1(1) through 9.1(15), the report shall include the following information:

- (1) Chemical and convective heat release rates per unit exposed area of specimen (kW/m²)
- (2) Generation rates of carbon monoxide and carbon dioxide (kg/sec)
- (3) Effective heat of combustion (kJ/kg)
- (4) Smoke yield values corresponding to wavelength of 632.8 nm
- (5) Specimen mass remaining after test (kg)
- (6) Specimen mass loss rate (kg/sec)
- (7) Number of replicate specimens tested under the same conditions

9.3 Fire Propagation Test. In addition to the information in Sections 9.1 and 9.2, the report shall include the following information:

- (1) Chemical heat release rate (kW)
- (2) Chemical heat release rate per exposed width or circumference of specimen (kW/m)
- (3) Flame height (m)
- (4) Thermal response parameter for the specimen, if previously obtained from the ignition test method (kW·sec^{1/2}/m²)
- (5) Fire propagation index, calculated using the value in Section 9.3(2) (m^{5/3}/kW^{2/3}sec^{1/2})
- (6) Number of replicate specimens tested under the same conditions