
**Building construction machinery and
equipment — Concrete mixers —**

**Part 2:
Procedure for examination of mixing
efficiency**

*Machines et matériels pour la construction des bâtiments —
Malaxeurs de béton —*

*Partie 2: Mode opératoire pour la détermination de l'efficacité de
malaxage*



STANDARDSISO.COM : Click to view the full PDF of ISO 18650-2:2014



COPYRIGHT PROTECTED DOCUMENT

© ISO 2014

All rights reserved. Unless otherwise specified, no part of this publication may be reproduced or utilized otherwise in any form or by any means, electronic or mechanical, including photocopying, or posting on the internet or an intranet, without prior written permission. Permission can be requested from either ISO at the address below or ISO's member body in the country of the requester.

ISO copyright office
Case postale 56 • CH-1211 Geneva 20
Tel. + 41 22 749 01 11
Fax + 41 22 749 09 47
E-mail copyright@iso.org
Web www.iso.org

Published in Switzerland

Contents

Page

Foreword	iv
Introduction	v
1 Scope	1
2 Normative references	1
3 Terms and definitions	1
4 Requirements for mixer verified	1
5 Mixing performance test	2
5.1 General.....	2
5.2 Concrete mix preparation.....	3
5.3 Sampling.....	3
5.4 Variance tests.....	9
6 Evaluation of test results	13
7 Test report	13
8 Final remarks	17
8.1 Filling ratio of tested mixer.....	17
8.2 Optimization of mixing time.....	17
Bibliography	19

Foreword

ISO (the International Organization for Standardization) is a worldwide federation of national standards bodies (ISO member bodies). The work of preparing International Standards is normally carried out through ISO technical committees. Each member body interested in a subject for which a technical committee has been established has the right to be represented on that committee. International organizations, governmental and non-governmental, in liaison with ISO, also take part in the work. ISO collaborates closely with the International Electrotechnical Commission (IEC) on all matters of electrotechnical standardization.

The procedures used to develop this document and those intended for its further maintenance are described in the ISO/IEC Directives, Part 1. In particular the different approval criteria needed for the different types of ISO documents should be noted. This document was drafted in accordance with the editorial rules of the ISO/IEC Directives, Part 2. www.iso.org/directives

Attention is drawn to the possibility that some of the elements of this document may be the subject of patent rights. ISO shall not be held responsible for identifying any or all such patent rights. Details of any patent rights identified during the development of the document will be in the Introduction and/or on the ISO list of patent declarations received. www.iso.org/patents

Any trade name used in this document is information given for the convenience of users and does not constitute an endorsement.

For an explanation on the meaning of ISO specific terms and expressions related to conformity assessment, as well as information about ISO's adherence to the WTO principles in the Technical Barriers to Trade (TBT) see the following URL: Foreword - Supplementary information

The committee responsible for this document is ISO/TC 195, *Building construction machinery and equipment*, Subcommittee SC 1, *Machinery and equipment for concrete work*.

This second edition cancels and replaces the first edition (ISO 18650-2:2006), of which it constitutes a minor revision. The main changes are:

- updated normative references in [Clause 2](#);
- notes added to [Clause 4](#) re requirements for mixer verified;
- an alternative coarse aggregates size added to [5.2](#);
- notes added to [Figure 3](#);
- mesh screen/coarse aggregate modified size in [5.4.1.1 d](#)), [Figure 7](#), [5.4.1.3](#), [Tables 1](#) and [4](#);
- corrected intersections on regression curves in [Figure 8](#).

ISO 18650 consists of the following parts, under the general title *Building construction machinery and equipment* — *Concrete mixers*:

- *Part 1: Vocabulary and general specifications*
- *Part 2: Procedure for examination of mixing efficiency*

Introduction

This part of ISO 18650 deals with the testing of the mixing capabilities of concrete mixers, characterized as the recommended mixing time.

The test consists of the determination of the variance of the mortar, coarse aggregate and air content, and the consistency of concrete mix samples, drawn after an assumed mixing time.

Compressive strength is also tested.

The measure of a concrete mixer's efficiency is the value of the variance of the above parameters, after the assumed mixing time.

This part of ISO 18650 provides for the preparation of concrete mix, sampling, execution of particular tests, criteria of test result evaluation and the test report.

STANDARDSISO.COM : Click to view the full PDF of ISO 18650-2:2014

STANDARDSISO.COM : Click to view the full PDF of ISO 18650-2:2014

Building construction machinery and equipment — Concrete mixers —

Part 2: Procedure for examination of mixing efficiency

1 Scope

This part of ISO 18650 specifies the procedure and requirements for examination of the mixing efficiency of batch-type and continuous-type concrete mixers as defined in ISO 18650-1. It is applicable to concrete mixers having a rated capacity greater than or equal to 70/50.

2 Normative references

The following referenced documents are indispensable for the application of this document. For dated references, only the edition cited applies. For undated references, the latest edition of the referenced document (including any amendments) applies.

ISO 1920-1, *Testing of concrete — Part 1: Sampling of fresh concrete*

ISO 1920-2, *Testing of concrete — Part 2: Properties of fresh concrete*

ISO 1920-3, *Testing of concrete — Part 3: Making and curing test specimens*

ISO 1920-4, *Testing of concrete — Part 4: Strength of hardened concrete*

ISO 3310-1, *Test sieves — Technical requirements and testing — Part 1: Test sieves of metal wire cloth*

ISO 6783, *Coarse aggregates for concrete — Determination of particle density and water absorption — Hydrostatic balance method*

ISO 7033, *Fine and coarse aggregates for concrete — Determination of the particle mass-per-volume and water absorption — Pycnometer method*

ISO 11375, *Building construction machinery and equipment — Terms and definitions*

ISO 18650-1, *Building construction machinery and equipment — Concrete mixers — Part 1: Vocabulary and general specifications*

3 Terms and definitions

For the purposes of this document, the terms and definitions given in ISO 18650-1 and ISO 11375 apply.

4 Requirements for mixer verified

The design and execution of the whole structure of the mixer and its components, such as the mixing chamber (drum, pan, or trough), rotor with blades or paddle agitator(s), their directions of rotation, charging and discharging devices (if any), should be verified according to the manufacturer's instructions.

It shall be determined that the number of revolutions per minute of a drum or mixing tools conforms to the manufacturer's specification.

The drive system should be able to restart 5 min after being stopped when the mixer has completed the mixing of the test batch as specified in 5.2.

NOTE 1 The “restart” is for the additional mixing and does not warrant a series of restarts for the next batches.

The mixer shall be discharged according to its design or as specified by the manufacturer. The closure of the mixing chamber shall be so designed that the loss of the mix before discharge, i.e. during charging and mixing, remains below 0,5 %.

NOTE 2 The “below 0,5%” does not apply to the 1st batch which has more adhesion of mortar to the inner wall of drum.

5 Mixing performance test

5.1 General

The mixing efficiency is determined by the uniformity of the concrete mix and the compressive strength of the concrete cubes or cylinders, sampled after mixing time. The determination of the uniformity of the concrete mix includes the following variance tests on the sampled specimens:

- a) air content;
- b) content of mortar per unit volume;
- c) content of coarse aggregate per unit volume;
- d) consistency (slump).

The values of the concrete-mix component content (air, mortar, coarse aggregate), determined as the test results, as well as the consistency and compressive strength, are subsequently used for calculation of their variances.

For calculating the variance, ΔX , of the considered components' content and other features, expressed as a percentage, the following formula is applied:

$$\Delta X = \frac{X_1 - X_2}{X_1 + X_2} \times 100$$

where

X_1 is the value of component content, slump and compressive strength received from portion 1 or 2 — larger value of X_1 and X_2 ;

X_2 is the value of component content, slump and compressive strength received from portion 1 or 2 — smaller value of X_1 and X_2 .

To explain the physical sense of this formula, it can be transformed as follows:

$$\Delta X = \frac{X_1 - X_2}{X_1 + X_2} = \frac{\frac{X_1 + X_2}{2} - X_2}{\frac{X_1 + X_2}{2}}$$

In this form it represents the variance of a subject parameter in two portions against its average value.

For evaluation of the test results, the particular variance values are compared with the acceptable results according to [Clause 6](#).

5.2 Concrete mix preparation

The test concrete to be used for the mixing performance test should be specified by the concrete manufacturer or testing laboratory with the following conditions: coarse aggregates up to 20 mm or 25 mm, slump (80 ± 30) mm, air content $(4,5 \pm 1,5)$ % and nominal compressive strength (25 ± 5) N/mm². In case of difficulty in obtaining of the assumed air content, an appropriate admixture may be used.

The quantity of components usually corresponds to the rating capacity declared by the mixer's manufacturer.

The constituent materials are to be weighed with measuring incertitude limits of ± 3 %.

The sequence of a mixer charging with particular components should be as specified in the manufacturer's instruction. If there is no such instruction, the method of charging should be noted in the test report.

The charging of a mixer with constituent materials shall be carried out with a minimum loss of materials.

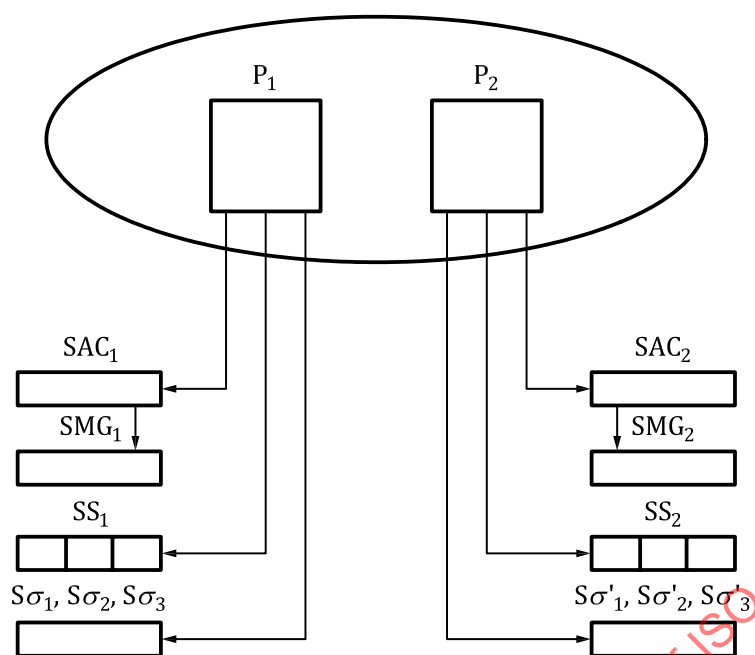
The mixing time shall be as specified by the manufacturer. If no such specification is available, the following approximate values — depending on the mixer type and its capacity — are recommended:

- a) For batch-type gravity mixers:
 - rated capacity 1,0 m³ and less, 60 s;
 - rated capacity above 1,0 m³, 5 s added to 60 s for every 0,5 m³ increase.
- b) For batch-type compulsory mixers:
 - rated capacity 3,0 m³ and less, 30 s;
 - rated capacity above 3,0 m³, 15 s added to 30 s for every 1,5 m³ increase.
- c) For continuous mixers: a mixing time corresponding to the duration of the concrete mix in the mixing chamber, which shall be at least 10 s.

5.3 Sampling

5.3.1 General

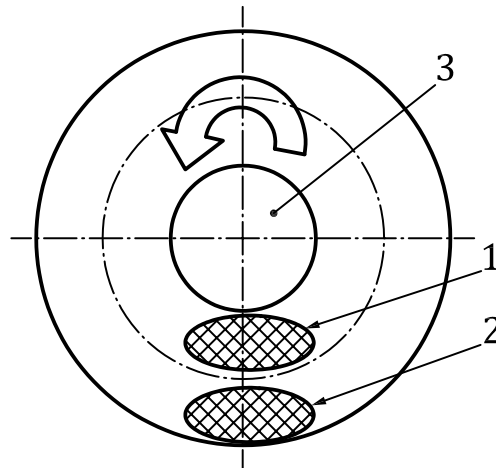
Two portions of the concrete mix are sampled directly from the mixing chamber immediately after ensured mixing time (see [Figures 2, 3, 4 and 5](#)). Where the direct sampling from inside the mixing chamber is difficult, the sampling may be done from the concrete mix discharged to the hopper (see [Figures 6 and 7](#)). The volume of the sample (portion) should be a minimum of 20 l for batch mixers and 100 l for continuous mixers (see [5.3.4](#)). Afterwards, the specimens for particular variance tests are prepared.

**Key**

P_1, P_2	concrete mix portion sampled from the mixer
SAC_1, SAC_2	specimens for air content test
SMG_1, SMG_2	specimens for air content test used for coarse aggregate and mortar content testing in further sequence
$S\sigma_1, S\sigma_2, S\sigma_3$	specimens for compressive strength test (three cubes or cylinders from each portion)
$S\sigma'_1, S\sigma'_2, S\sigma'_3$	specimens for consistency (slump) test
SS_1, SS_2	

Figure 1 — General scheme of sampling**5.3.2 Batch-type compulsory mixers****5.3.2.1 Pan-type mixers**

In pan-type mixers the samples (portions) are taken from concentric circles. [Figure 2](#) shows an example of sampling in a turbo mixer.

**Key**

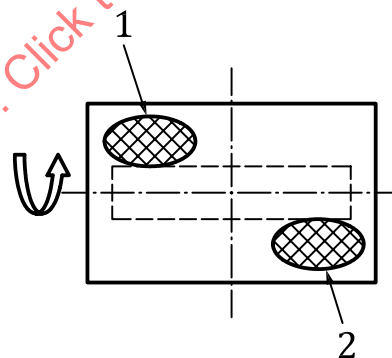
- 1 centre portion
- 2 edge portion
- 3 centre cylinder covering dead mixing area

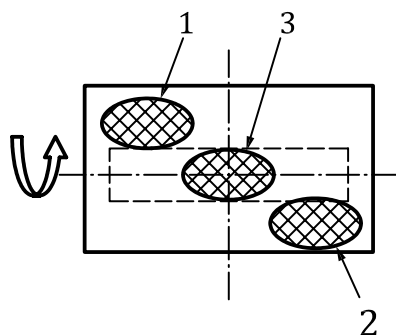
Figure 2 — Sampling in turbo mixer

In other types of pan-type mixers, those not having a centre cylinder covering the dead mixing area, the radius separating two concentric circles is equal to a quarter of the inner pan diameter.

5.3.2.2 Paddle mixers

Examples of sampling in paddles mixers with one or two paddle agitators are shown in the [Figure 3](#).

**a) One-agitator mixer**



b) Two-agitator mixer

Key

- 1 front portion
- 2 rear portion
- 3 centre portion

Key items 1, 2 and 3 designate the portion of concrete being mixed in the drum. They shall be sampled right after discharge.

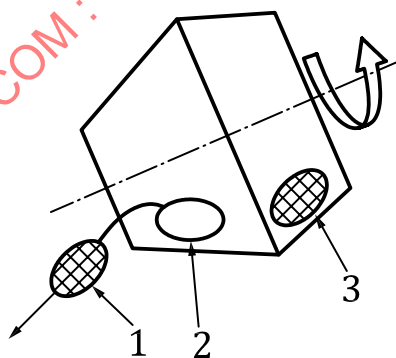
Item 3 designates that portion to be sampled only in case it is impossible to sample from the portion designated 1 or 2.

Figure 3 — Sampling in paddle-type mixer

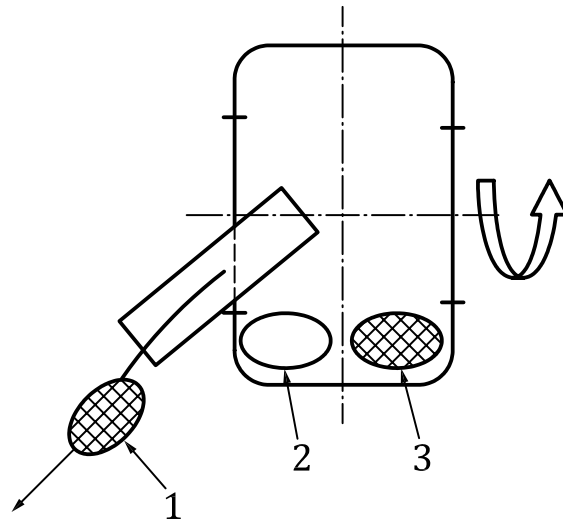
5.3.3 Gravity mixers

The concrete mix portions are taken to the receiving containers from the beginning and the end of the concrete discharge stream, as shown in [Figure 4](#).

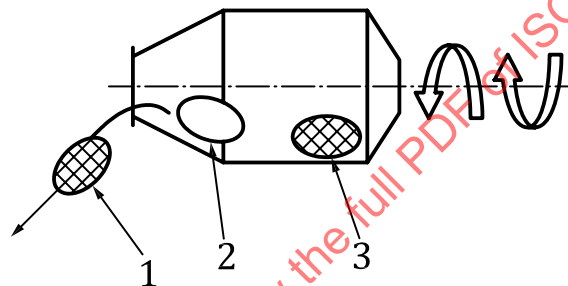
A batch during discharging is conventionally divided into three parts (beginning, middle and end) from which the corresponding portions are taken.



a) Tipping drum mixer



b) Discharging chute drum mixer



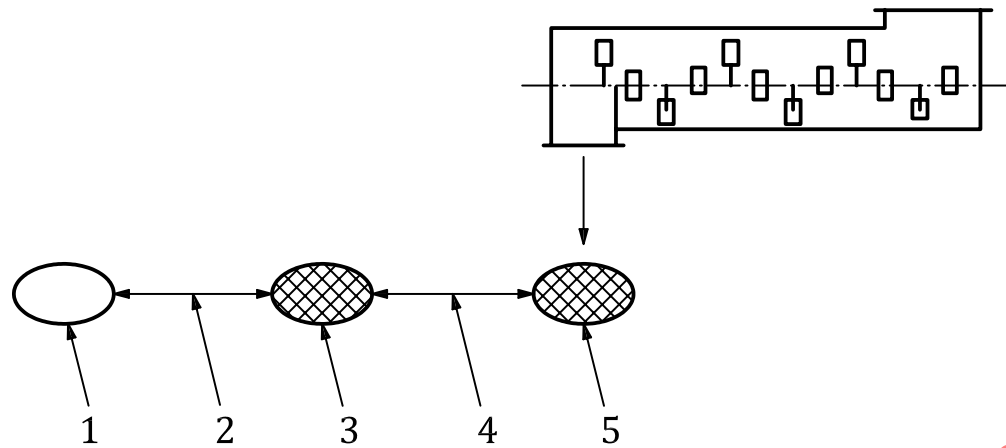
c) Reversing drum mixer

Key

- 1 beginning portion
- 2 middle portion
- 3 end portion

Figure 4 — Sampling in gravity mixers**5.3.4 Continuous mixers**

The first-sampled portion should be from a stable flow, just at the moment when the discharged concrete reaches output capacity, with another sample being taken 4 min after the first. The volume of each portion should be at least 100 l. See [Figure 5](#).



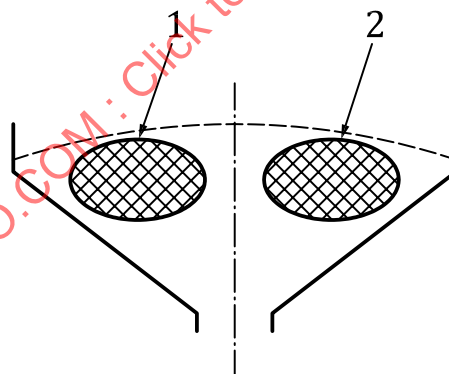
Key

- 1 missed, initial quantity concrete mix until stable delivery achieved
- 2 break minimum 0,5 min
- 3 first portion
- 4 break minimum 4 min
- 5 second portion

Figure 5 — Sampling in continuous mixer

5.3.5 Sampling from a concrete mix hopper

If there is no method of sampling from a mixing chamber directly, the portions can be taken from concrete mix hopper. The scheme of sampling is shown in [Figure 6](#).



Key

- 1 left portion
- 2 right portion

Figure 6 — Sampling from concrete mix hopper

5.4 Variance tests

5.4.1 Variance of air, mortar and coarse aggregate content in concrete mix

5.4.1.1 Test procedure

Perform the following procedure (see [Figures 1](#) and [7](#)).

- a) Take one concrete mix specimen from each portion.
- b) Determine the air content, A_1 and A_2 , of the specimens, using the pressure method in accordance with ISO 4848 (see [5.4.1.2](#)).

With the same test specimens — following the air content determination — determine the mortar and coarse aggregate content as follows.

- c) Measure the masses, m , of the specimens.
- d) Remove all particles in the specimens by washing on either a 4 mm or 4,75 mm screen in accordance with ISO 3310-1.
- e) Determine the mass of coarse aggregate.

Calculate the aggregate masses as follows:

- the mass of coarse aggregate remaining on the screen in the saturated surface-dry condition (m_s);
- the density of coarse aggregate in the saturated surface-dry condition (D_s), in accordance with the test methods for particle mass-per-volume and water absorption given in ISO 6783 and ISO 7033;
- the virtual mass of coarse aggregate remaining on the screen in water (m_w).

NOTE There are two alternative methods of coarse aggregate volume measurement: saturated surface-dry method (m_s), (1) in [Figure 7](#), or calculation from mass of coarse aggregates in water (m_w), (2) in [Figure 7](#).

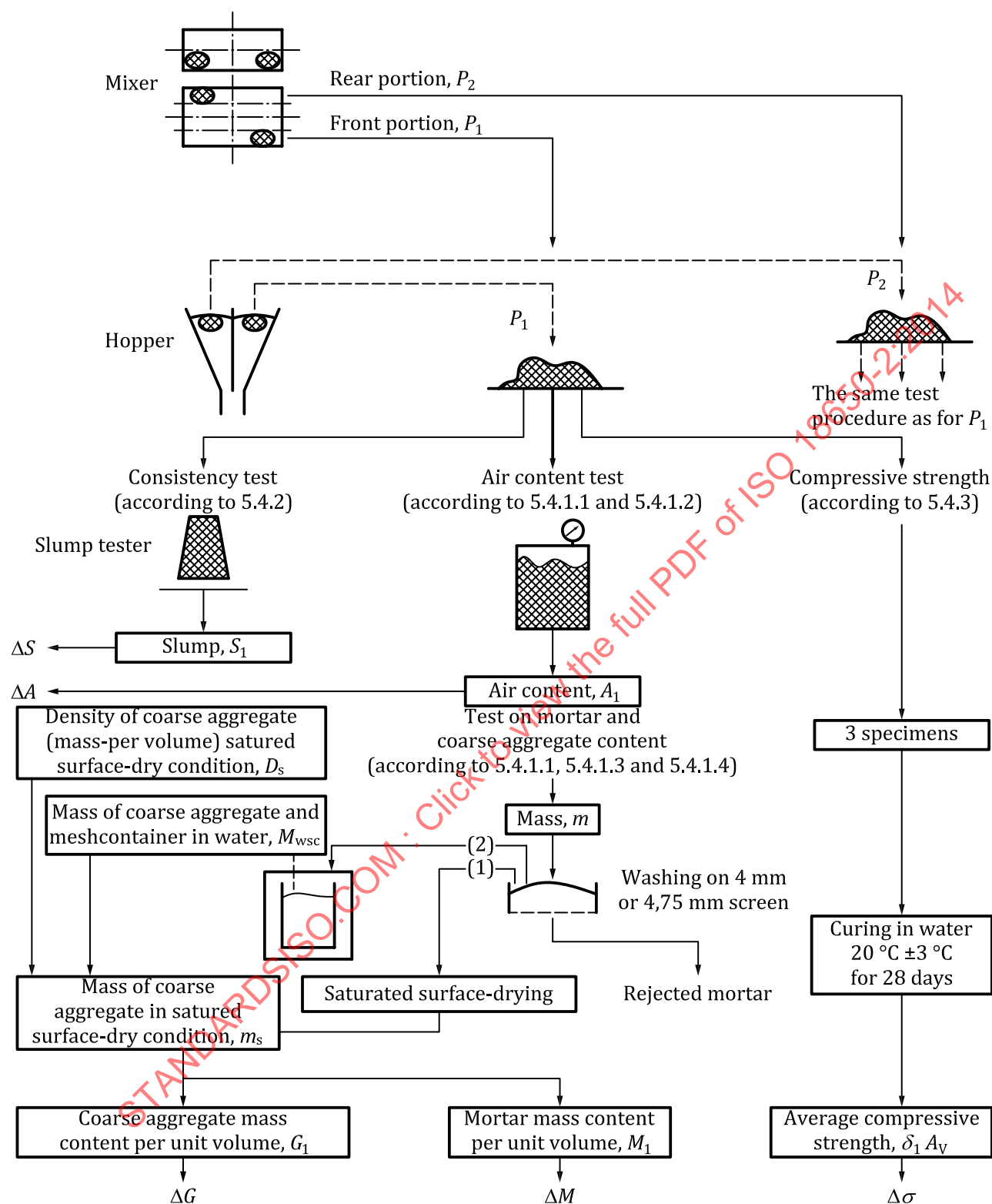


Figure 7 — Example of testing procedure for two-agitator paddle mixer and hopper use

5.4.1.2 Calculation of air content variance

For the air content test of the concrete mix, take two test specimens according to 5.3.1 and test according to ISO 4848; their variance, ΔA , from the average value, is calculated as a percentage using the formula:

$$\Delta A = \frac{A_1 - A_2}{A_1 + A_2} \times 100$$

where

A_1 is the air content value of specimen SAC₁ (see Figure 1);

A_2 is the air content value of specimen SAC₂ (see Figure 1).

In the case where $A_2 > A_1$, the absolute value of ΔA should be taken.

5.4.1.3 Calculation of mortar content variance

The mass of mortar per unit volume without air, M , per unit volume of concrete mix, is calculated in kilograms per cubic metre (kg/m³) using the formula:

$$M = \frac{m - m_s}{V - \left(V_A + \frac{m_s}{D_s} \right)} \times 1\,000$$

where

m is the mass of the concrete mix, in kilograms (kg) [see 5.4.1.1, c)];

m_s is the mass of coarse aggregate remaining on the 4 mm or 4,75 mm mesh screen in saturated surface-dry condition (kg) [see 5.4.1.1, e)];

V is the volume of the container, in litres (l), used in the air content test according to ISO 4848 [see 5.4.1.1, b)];

V_A is the volume of air in litres (l) calculated from the volume (V) of the container, multiplied by the air content ratio (%) divided by 100;

D_s is the density of coarse aggregate (particle mass-per-volume) in saturated surface-dry condition, in kilograms per litre (kg/l).

The mass of coarse aggregate, m_s , remaining on the 4 mm or 4,75 mm mesh screen after the virtual mass of coarse aggregate in the water has been measured is calculated using

$$m_s = m_w \times \frac{D_s}{D_s - 1}$$

where

m_w is the mass of coarse aggregate in the water (kg);

D_s is the density of the coarse aggregate (particle mass-per-volume) in saturated surface-dry condition (kg/l).

The unit mass variance, ΔM , of mortar in concrete mix is then calculated, as a percentage, using

$$\Delta M = \frac{M_1 - M_2}{M_1 + M_2} \times 100$$

where

M_1 is the mortar content of specimen SMG₁ (see [Figure 1](#));

M_2 is the mortar content of specimen SMG₂ (see [Figure 1](#)).

In the case where $M_2 > M_1$, the absolute value of ΔM should be taken.

5.4.1.4 Calculation of coarse aggregate variance

Coarse aggregate mass, G , in saturated surface-dry condition per unit volume is calculated in kilograms per cubic metre (kg/m³) using the formula:

$$G = \frac{m_s}{V} \times 1\,000$$

where m_s and V are as given in [5.4.1.3](#).

Coarse aggregate mass variance, ΔG , in the concrete mix, expressed as a percentage, is then calculated using

$$\Delta G = \frac{G_1 - G_2}{G_1 + G_2} \times 100$$

where

G_1 is the coarse aggregate content of specimen SMG₁ (see [Figure 1](#));

G_2 is the coarse aggregate content of specimen SMG₂ (see [Figure 1](#)).

In the case where $G_2 > G_1$, the absolute value of ΔG should be taken.

5.4.2 Consistency test

Verify the consistency of two specimens taken according to [5.3.1](#) by the slump test, using the method specified in ISO 4109; their variance, ΔS , from the average value is then calculated as a percentage using the formula:

$$\Delta S = \frac{S_1 - S_2}{S_1 + S_2} \times 100$$

where

S_1 is the slump value of specimen SS₁ (see [Figure 1](#));

S_2 is the slump value of specimen SS₂ (see [Figure 1](#)).

In the case where $S_2 > S_1$, the absolute value of ΔS should be taken.

5.4.3 Compressive strength test

For the compressive strength test, take three specimens from each portion (see [Figures 1](#) and 7) and prepare in accordance with ISO 1920-3 and ISO 2736-1. Perform the test in accordance with ISO 4012.

The curing method of these specimens shall be in accordance with ISO 2736-2, with a curing period of 28 days.

The average compressive strengths, σ_{1AV} and σ_{2AV} , for particular portions are then calculated for portion 1 and portion 2, respectively using the formulae:

$$\sigma_{1AV} = \frac{\sigma_1 + \sigma_2 + \sigma_3}{3}$$

$$\sigma_{2AV} = \frac{\sigma'_1 + \sigma'_2 + \sigma'_3}{3}$$

where

$\sigma_1, \sigma_2, \sigma_3$ is the compressive strength of specimens $S\sigma_1, S\sigma_2, S\sigma_3$, taken from portion 1;

$\sigma'_1, \sigma'_2, \sigma'_3$ is the compressive strength of specimens $S\sigma'_1, S\sigma'_2, S\sigma'_3$, taken from portion 2.

Compressive strength variance $\Delta\sigma$ is calculated using

$$\Delta\sigma = \frac{\sigma_{1AV} - \sigma_{2AV}}{\sigma_{1AV} + \sigma_{2AV}} \times 100$$

In the case where $\sigma_{2AV} > \sigma_{1AV}$, the absolute value of $\Delta\sigma$ should be taken.

6 Evaluation of test results

With the aim of the mixing time acceptance, the variance of the concrete mix component content proportions, the consistency, and the compressive strength of the concrete cubes or cylinders shall be in accordance with [Table 1](#).

Table 1 — Uniformity requirement

No.	Type of test	Acceptable variance value %
1	Air content variance ΔA in concrete mix (see 5.4.1.2)	≤ 10
2	Mortar (≤ 5 mm) content variance ΔM in concrete mix (see 5.4.1.3)	$\leq 0,8$
3	Coarse aggregate (> 4 or $4,75$ mm) content variance ΔG in concrete mix (see 5.4.1.4)	≤ 4 or $4,75$
4	Consistency (slump) variance ΔS (see 5.4.2)	≤ 15
5	Compressive strength variance $\Delta\sigma$ (see 5.4.3)	$\leq 7,5$

7 Test report

After the tests are concluded, a test report should be prepared. The format of the report should be according to [Tables 2, 3](#) and 4. [Tables 2](#) and [3](#) present data on the tested concrete mixer and the concrete mix preparation, while [Table 4](#) presents the numerical values of the particular tests.

Table 2 — Batch type concrete mixer — Data on mixer and concrete mix preparation

Requested by:				
Type of mixer:				
Product plate information:				
Manufacturer:				
Dry components/ ready concrete capacities (dm ³)	Type	Serial number	Year of manufacture	Power source output (kW)
Remarks for mixing conditions (see 5.2):				
Mixing procedure:				
Mixing conditions:	Test concrete			
	Sample mixture 1		Sample mixture 2	
Mixed volume — ready concrete (dm ³)				
Filling ratio (Mixed volume by nominal capacity) (%)				
Drum, number of revolutions (min ⁻¹)				
Shaft, number of revolutions (min ⁻¹)				
Charging time t_1 (s)				
Mixing time t_2 (s)				
Discharging time t_3 (s)				
Resetting time t_4 (s)				
Cycle time $t_s = t_1 + t_2 + t_3 + t_4$ (s)				
Remarks				
Test place:	Test date:		Test report:	
Name and address of the test facility:				
Test report date:				
Tested by (signature):				